

MERIDIAN LINE & SEC. COR. #2

MERIDIAN LINE
AND
SECTION COR.

1978

Book #2

TELEDYNE

408

MINING TRANSIT BOOK

Property of CACHE Co.

Address Rm 210 179 N MAIN
LOGAN UTAH

Telephone 752 9744

This Book is manufactured of a High Grade
50% Rag Paper having a Water Resisting Surface,
and is sewed with Nylon Waterproof Thread.

INDEX

	PAGE
RUNNING MERIDIAN 11 N RUN #1	1-2
RUN #2	
RUN #3 MERIDIAN 11 N	5
RUN #4	6
RUN #5	7
SUMMARY OF NORTH 2 MILES S.L.M., 11 N 7 B	
BASED ON "RICHLAND ACRES" PLAT	
RUNNING LINE N FROM 24+19	8-9
RUNNING LINE S FROM 24+19 TO	
TOWNSHIP CORNER	10-11
MONUMENTATION CORNER $\frac{146}{1279}$	12
$\frac{1279}{13118}$	13
$\frac{13118}{24+19}$	14
$\frac{24+19}{25+30}$	15
12+7	16
TOWNSHIP CORNER 1W $\frac{12N}{11N}$ 1E	17

20 JULY 78

(1)

CLEAR, HOT

HUDSON P.C.

WARD T

COMMENCE RUNNING IN S.L. MERIDIAN
ON TWP 11 N.

FROM RECORDED SUBDIVISION MAP OF
"RICHLAND ACRES" RECORDED IN 1916 AND
IN FILE B-50 OF COUNTY RECORDERS OFFICE
RAN IN BASIS OF BEARING ON ϕ OF
MENDON ROAD $\frac{1}{2}$ MILE ^{SOUTH} AND 1 MILE WEST OF
TOWNSHIP CORNER RUNNING WEST.

TURNED ϕ OF $89^{\circ}44'$ TO BEARING OF
NO $^{\circ}$ 16 W (RECORDED) AND RAN TO
CORNER $\frac{35}{2}$ $\frac{36}{1}$ BEING A BRASS CAP MONUMENTED
BY CACHE CO. IN 1971.

THENCE RAN EAST RECORDED BEARING AND
DIS F 1 MILE DISTANCE AND SET TWO
POINTS EITHER SIDE OF 1 MILE DISTANCE.
FOR TOWNSHIP CORNER

RECORDED
DIST.

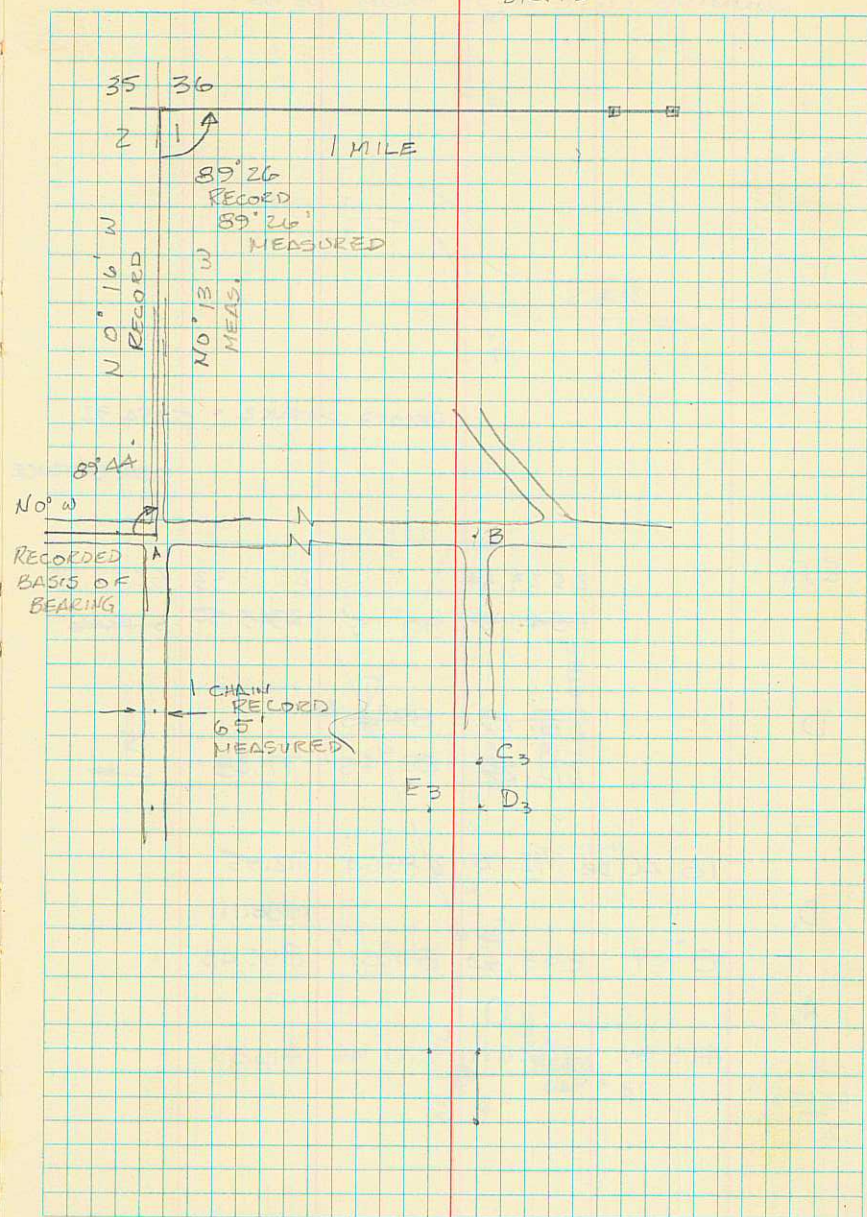
$\frac{35}{2}$ $\frac{36}{1}$

$89^{\circ}47'$ 2664.43 ϕ $90^{\circ}15'$ 2664.40 2665.74

A $89^{\circ}44'$ RECORDED

4 N

416.61
270.46



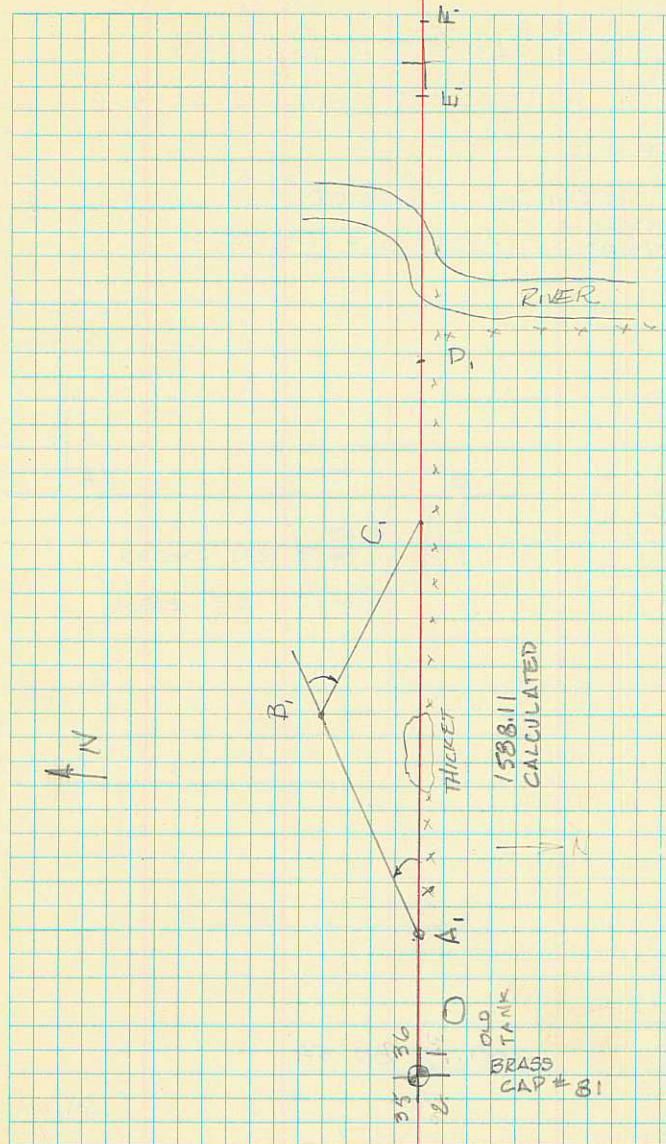
(1)
 RUNNING LINE WEST FROM $\frac{211}{3556}$

RECORD DISTANCE = 5254.92

TOTAL DISTANCE

E, F,	2523.34		2523.33	5299.99
	2343.51	90° 15'	2343.50	5119.46
D,	771.29	89° 45'		
	771.29	89° 45'	771.28	
C,				
	18° 20' DR	712.95	489.54	712.95
B,				1588.11
	8° 07'	895.43	89° 51'	895.43
A,				
	416.61	416.61	270° 46'	416.57

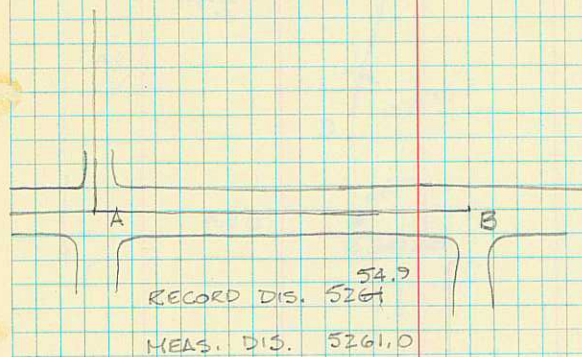
$\frac{35136}{2} = 1$



(2)

COMMENCE AT PT A AND RUN
 EAST TO INTERSECT ROADS AT C'S
 1 MILE EAST
 TOTAL DISTANCE 5261.00
 RECORDED
 MEASURED DISTANCE = 5254.9

3



B.

1899.82 89° 54'

A'

5261.00

0° 4' R 3361.24 270° 03'

A

RUNNING NORTH

RUNNING NORTH FROM "B" TO TOWNSHIP CORNER

FROM B SET OFFSET ON AB 169.80'
 175.00'
 WEST OF B 344.80'

F

76 29 55 11.61

E

13 45 05 15 17.39 90° 18'

D

90° 00' 1176.10 89° 57'

C

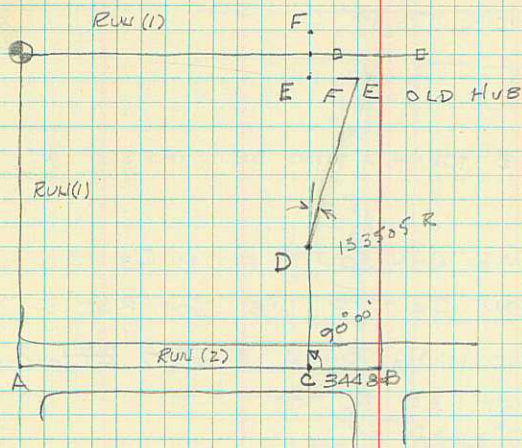
169.80 CHAINED 200' STEEL TAPE

B

1188.8

98° 27' 15"

4



FROM A. RUNNING SOUTH AND WEST TO CHECK
CORNER OF 12¹⁶/₁₇ RUN (4) EAST

25 JULY 78

CLEAR, HOT

HUDSON P.C.

WARD K

START AT "A" BACKSIGHT ALONG MENDON
ROAD WEST AND TURN $\times 90^{\circ} \frac{18}{19}$ TO RUN
SOUTH 2605.7 (RECORDED DISTANCE,
RECORDED \times) PT SHOULD BE ON
CORNER BETWEEN LOTS 58 AND 59.

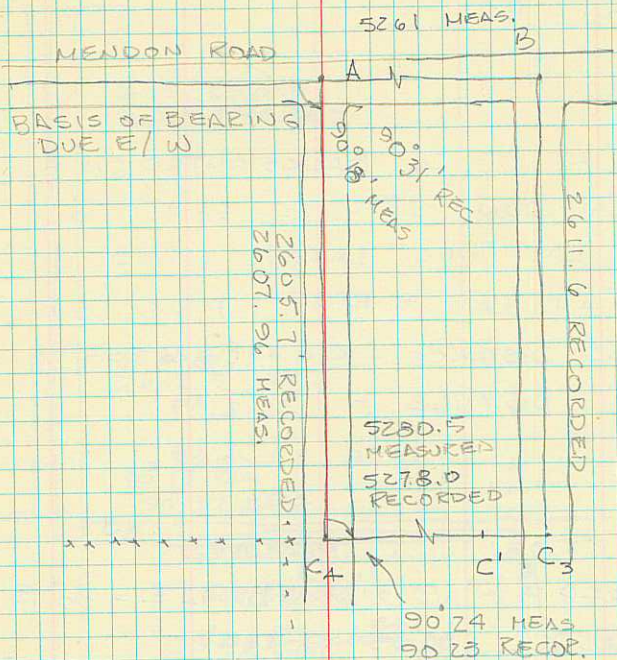
				REC. DIST.	
	$590^{\circ} 18'$	2607.96	$\times 89^{\circ} 57'$	2607.96	2605.7
C4	$90^{\circ} 24'$	4045.97	$\times 90^{\circ} 23'$	4045.88	
C1				MEASURED	
		1234.66	$\times 269^{\circ} 55'$	1234.66	5280.54
C3				RECORDED	
					5278.5

CORNER CHECKS WITHIN 25' DISTANCE
 $0^{\circ} 1'$ BEARING.
 \therefore CORNER IS GOOD.

47.50
33

A N

6



F RUNNING LINE SOUTH AND EAST FROM C₄
 C TO CHECK 1/4 CORNER BULL (5)

Z 26 JULY 78 HOT CLEAR

H HUDSON P.C.

W WARD T

S START AT PT C₄ BACKSIGHTED ON "A"
 R AND RAN DOWN 2557.74 + 54.75 TO
 S ϕ OF EAST/WEST LANE.

R TURNED AND RAN W EAST 1 MILE TO PT H₃

C RECORDED DISTANCE - C₄ - B₅ = 2589.8

MEAS. DISTANCE - 2612.49

DIFF. = 22.69

TURNED \angle OF MEASURED
 RECORDED \angle = $90^{\circ} 31' 10''$ W $189^{\circ} 42' E = 90^{\circ} 13'$
 MEASURED \angle = $90^{\circ} 33' 10''$ $90^{\circ} 39' 20''$

DISTANCE 5271.8' MEASURED
 5278.7' RECORDED

CENTER OF INTERSECTION IS 5.6' NORTH
 OF POINT H₃ AND 0.1' TO EAST

RECORDED
 H₃ - C₄ IS 2630.10
 MEASURED IS 2634.7

MEASURED - 5.6 (BETWEEN H₃ AND CENTER) = 29.1

OR CENTER IS 1' OFF IN DISTANCE = 2629.1
 AND IS ON LINE N & S

54.75 2557.74

A N

5 S

7

BASIS OF
 BEARING MERIDIAN

2605.7 RECORDED
 2607.9 MEASURED

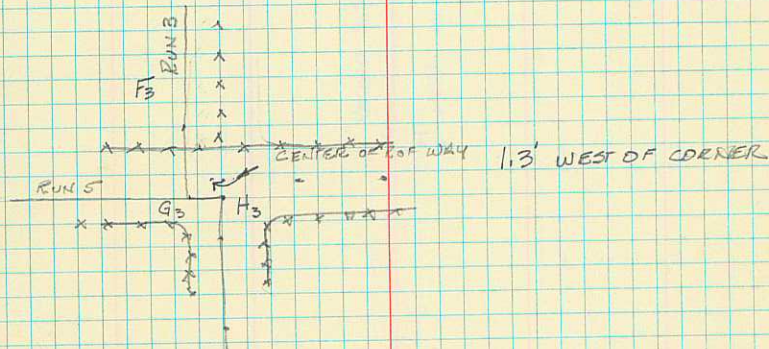
C₄

2589.8 RECORDED
 2612.5 MEAS.

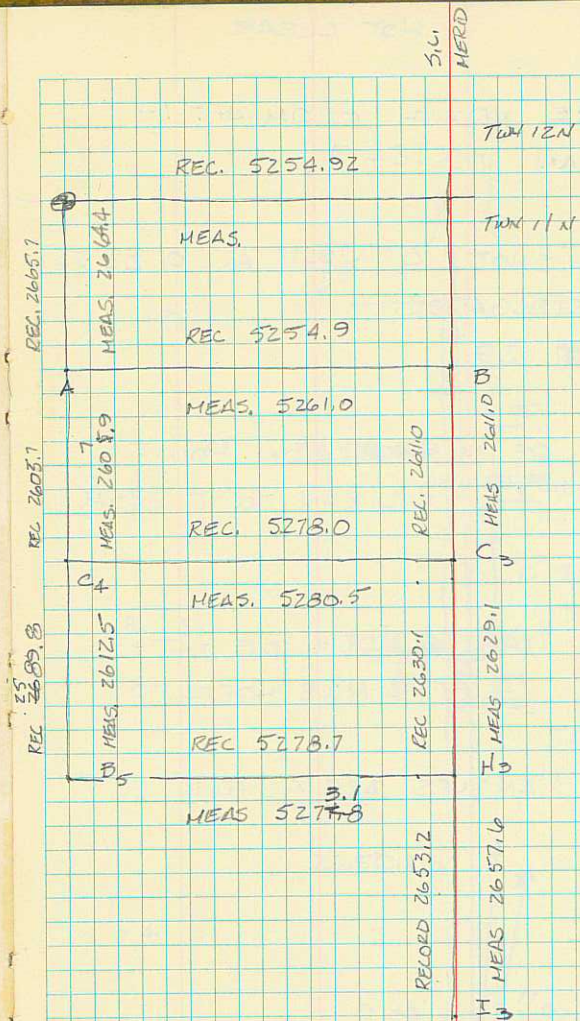
90° 13' REC
 90° 39' MEAS.

5271.8 MEAS.

5278.7 RECORDED



FOLLOWING IS SUMMARY OF PTS AND DISTANCES
 BASED ON RECORDED PLAT OF RICHLAND AGRES
 RECORDED IN 1916
 NORTH 2 MILES OF TWP 11 N S. 1. MERIDIAN



HOT CLEAR

27 JULY 78

RUNNING LINE NORTH FROM 24+19
ON S.L. MERIDIAN TO 12+7.

TOOK POLARIS SHOT 27 JULY AT 01 22 55
AT EASTERN ELONGATION.

POLAR $\alpha = 10^{\circ} 01' 29''$

SET CENTER OF INTERSECTION POINT
AT CORNER $\frac{13, 18}{24+19}$ AND RAN TO IT FROM
24+19.

SET \odot OF ROAD $\frac{1}{4}$ MILE NORTH OF $\frac{13, 18}{24+19}$
AND RAN FROM $\frac{13, 18}{24+19}$ $\frac{1}{2}$ MILE NORTH TO
13+18. SET POINT,

DISTANCES & ANGLES ARE AS FOLLOWS

13+18

$0^{\circ} 51' 00''$ LT 2653.49 $90^{\circ} 16'$ 2653.46

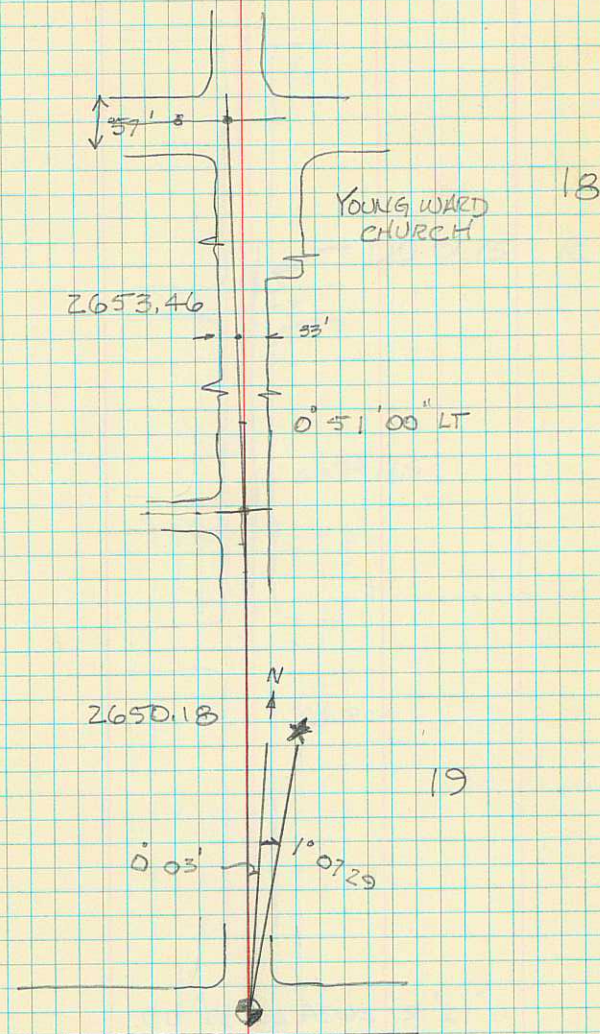
$\frac{13, 18}{24+19}$

$0^{\circ} 03'$ 2650.26 $90^{\circ} 26'$ 2650.18

24+19

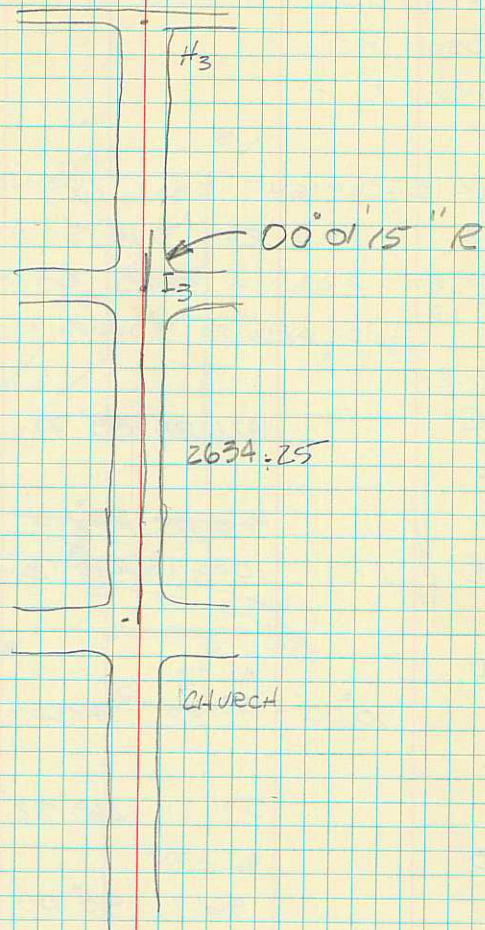
$0^{\circ} 03'$ 2650.26 $90^{\circ} 26'$

8



CONTINUE LINE TO I₃

9



I₅

0° 12' R 2634.25 90° 09'

13 + 18

RUNNING TRUE SOUTH LINE FROM 2419
TO TOWNSHIP CORNER $1\frac{11}{10}$ IE

31 JULY 78

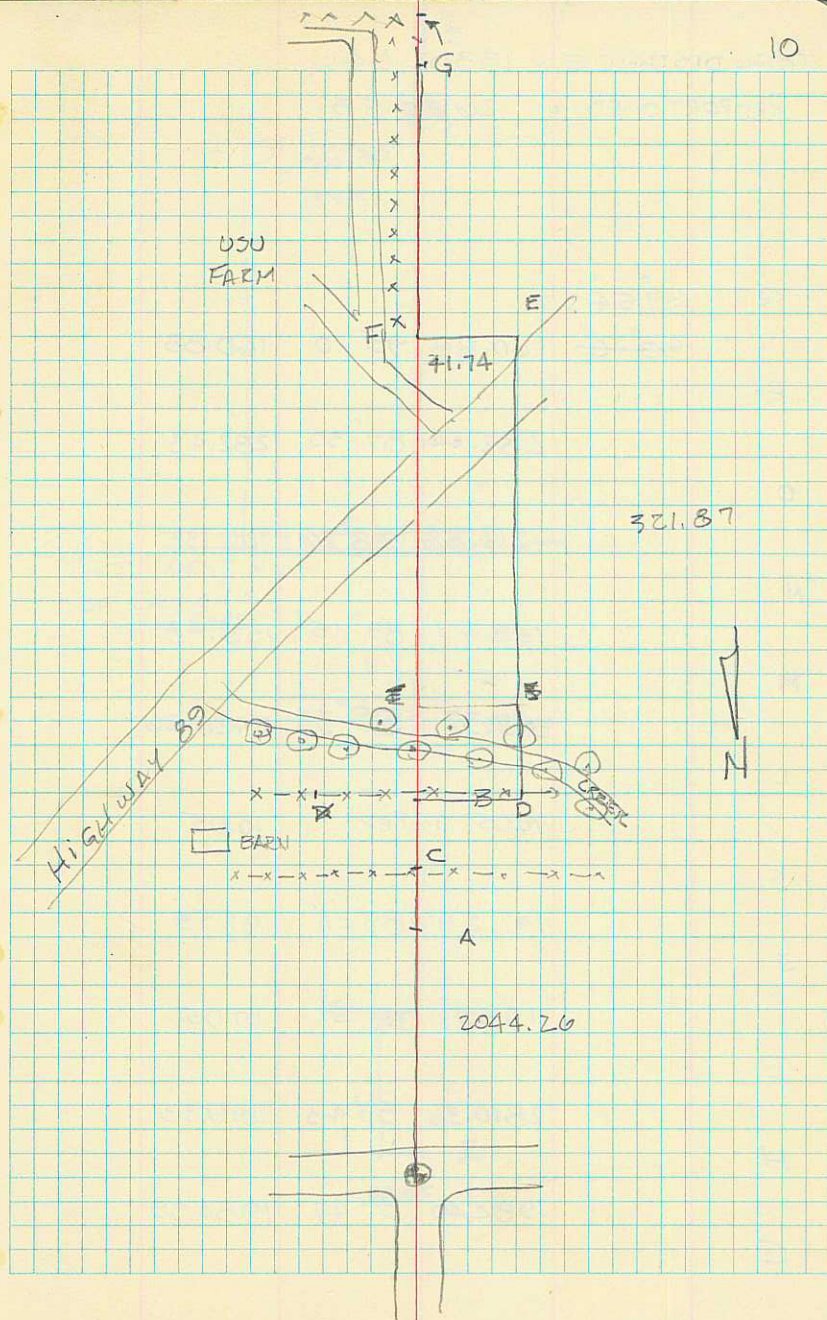
HOT, CLEAR

HUDSON P.C.

WARD K

TOOK BACKSIGHT ON TRUE NORTH POINT (SEE
PAGE) AND RAN DUE SOUTH $2\frac{1}{2}$ MILES.
OFFSET AROUND TREES SOUTH OF SEC COR
2419 AND AROUND HOUSE NORTH OF TOWNSHIP
CORNER.

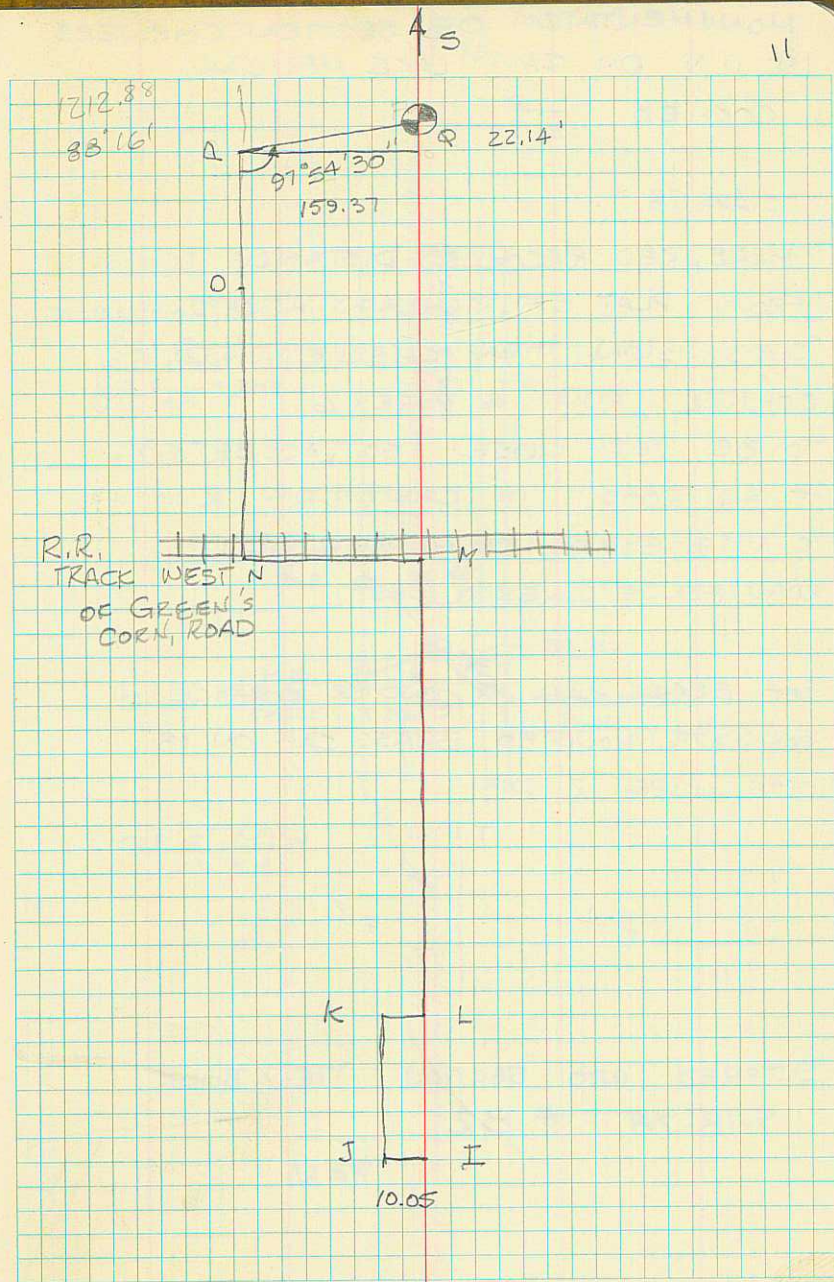
G	1326.84	$89^{\circ}50'$	1326.83
F	1326.84	$89^{\circ}50'$	
E	1030.75	$270^{\circ}14'$	1030.74
D	41.74		41.74
B C	$90^{\circ}00'$	33.00 TAPED	41.74
	571.71	$269^{\circ}52'$	571.71
B	961.77	$90^{\circ}09'$	961.77
A	2044.26	$89^{\circ}42'$	2044.23
2419			



TOTAL DISTANCE = 13302.64

PROPORTIONED = 2660.53

Q	97°54'30"		
	90°10'	160.88	90°10' 160.88
P		282.44	89°30' 282.43
O		1212.88	88°16' 1212.33
N		158.49	89°15' 158.48
M		3420.37	89°33' 3420.26
L		10.05 TAPE	10.05
K		191.59	89°31' 191.58
J		10.05 TAPE	10.05
I		2810.36	89°43' 2810.33
H		1984.40	89°41' 1984.39
G			



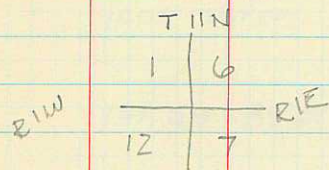
MONUMENTATION OF SECTION CORNERS
IN 11N ON SALT LAKE MERIDIAN.

CORNER $\frac{1}{16}$
 $\frac{12}{7}$

2 AUG 78

MEASURED RECORDED DISTANCE 26110
FROM PLAT OF RICHLAND ACRES
SUBDIVISION. THEN CHECKED INTO
CORNER (RUN # 4 PAGE 6) FOUND
TO BE VERY CLOSE SO ACCEPTED
PT AS GOOD. IN CENTER OF R OF W
 $\frac{1}{2}$ MILE SOUTH OF MENDON ROAD.
ROAD/FENCE LINE TO WEST

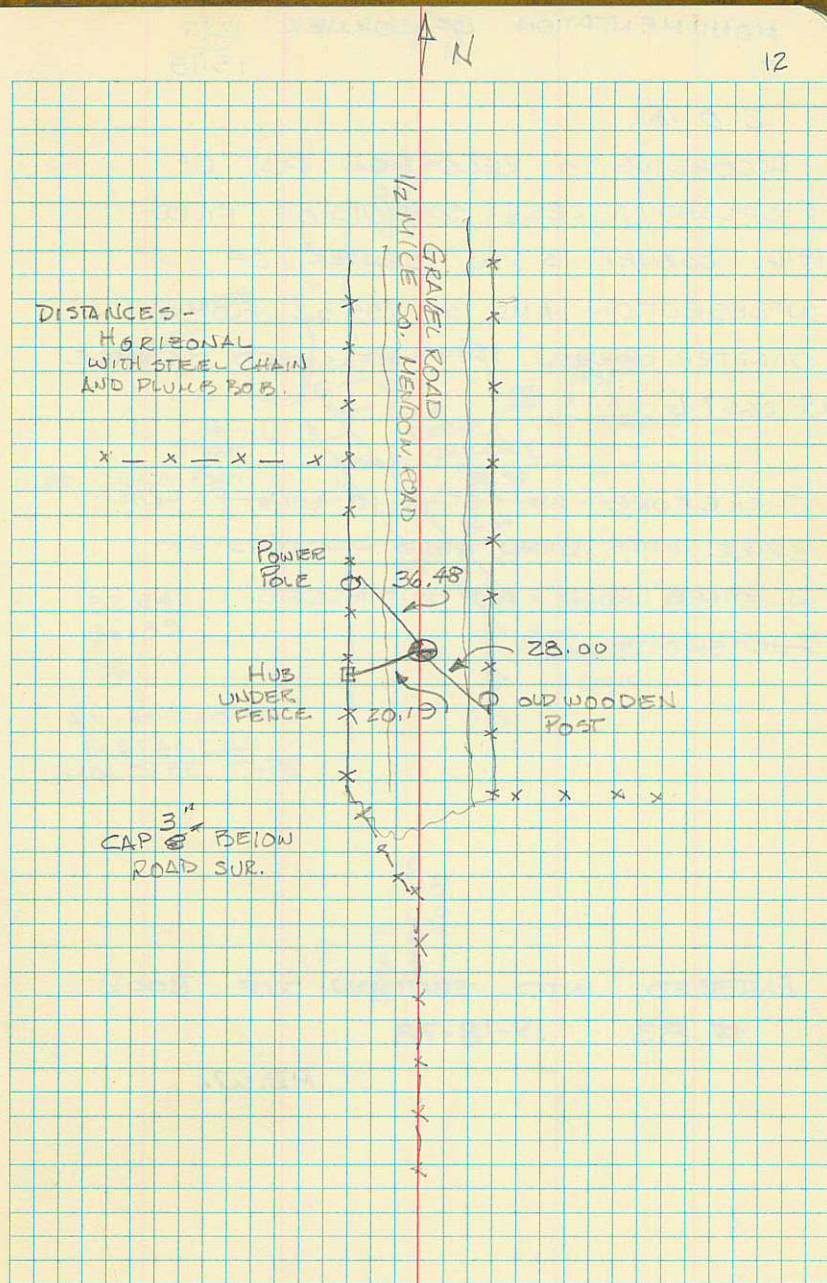
SET BRASS CAP $\frac{3}{4}$ " UNDER SURFACE IN
CONCRETE. MOUNTED BRASS CAP ON 18"
STEEL PIPE 2" DIA.



ENTERED INTO SECTION TIE BOOK

9-18-78 # 82

P.B.W.



MONUMENTATION OF CORNER 13 | 18
T 11 N S.L. MERIDIAN 24 | 19

2 AUG 78

PLATS SHOW THIS CORNER TO BE IN
CENTER OF INTERSECTION. MEASURED

DISTANCE FROM 24 | 19 (BRASS CAP) IS
2650.18 BEARING OF N 0° 03' W. TRUE.

SET 10' RAILROAD SPIKE ON POINT. SET
REBAR 4x4' IN GROUND WITH CONCRETE

COLLAR IN ASA W.P.

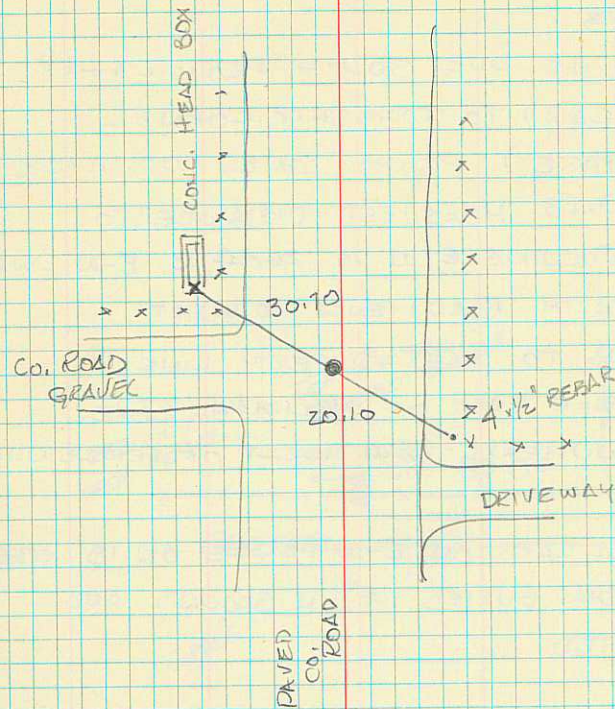
CHISELED "X" IN CONCRETE HEAD BOX

~~SET POINT NAIL AND FLAGGING ON~~

~~TOP OF FENCE POST.~~

ENTERED INTO SECTION TIE
BOOK # 84

P.B.W.



All DISTANCES HORIZONTAL
WITH STEEL CHAIN

MONUMENTATION OF CORNER

24 | 19
25 | 30 TWIN N. SLK

2 AUG 78

RAN LINE DUE SOUTH FROM 24 | 19
(BRASS CAP) TO TOWNSHIP CORNER

(SEE PAGE) PROPORTIONED DISTANCE

2660.53. MEASURED DISTANCE TO
FENCE RUNNING E/W IS 2684.13. E-W LINE

CHECKS WITH ROAD/FENCE TO WEST.

ACCORDING TO PLAT PROPERTY LINE IS

1. CHAINS EAST OF MERIDIAN LINE.

SET MONUMENT 89.0' WEST OF FENCE LINE.

SET BRASS CAP ON E-W FENCE ON 18" STEEL
PIPE 2" DIA. BURIED 14" IN GROUND AND
CONCRETED

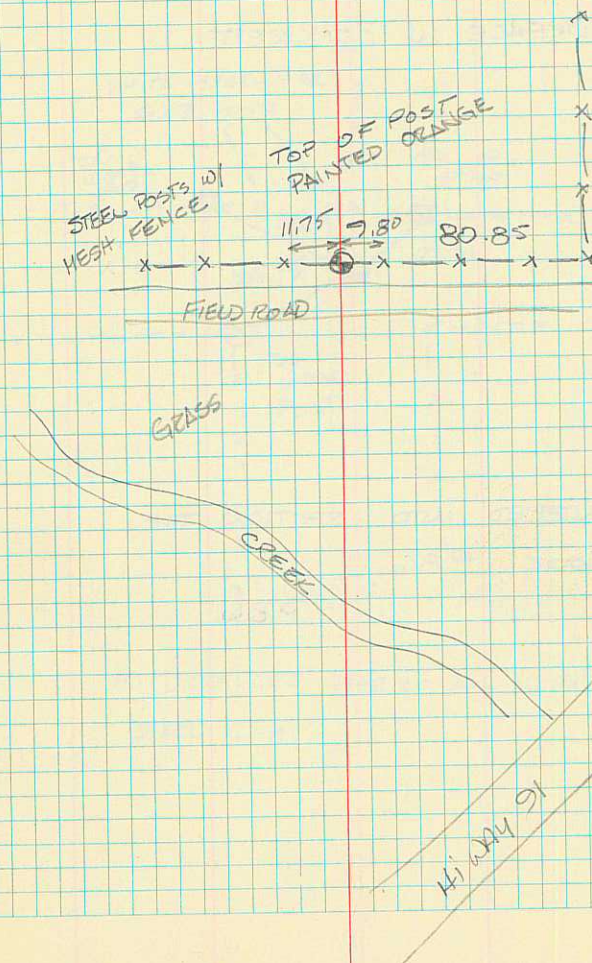
ENTERED INTO SECTION TIE

BOOK # 85

P.B.W.

4 N

15



MONUMENTATION OF

12+7 T11N E SLM

2 AUG 78

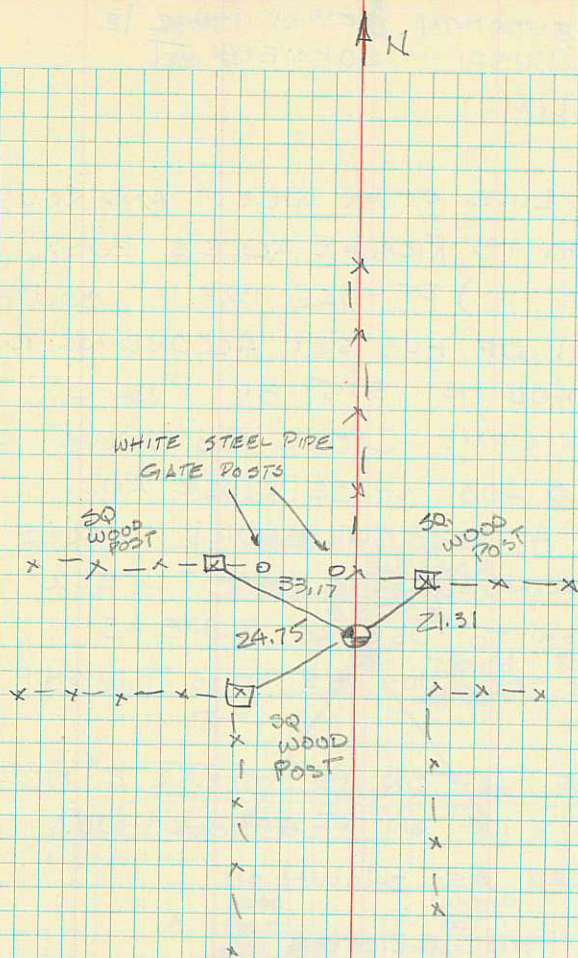
FROM RICHLAND ACRES SUBDIVISION PLAT
RECORDED 1916 RAN DISTANCES & BEARINGS
TO ARRIVE AT CORNER. (SEE RUN # 3, 5)

SET BRASS CAP ON 18" STEEL PIPE 3" UNDER
ROAD SURFACE IN CONCRETE

ENTERED INTO SECTION TIE

BOOK #86

P.B.W.



ALL DISTANCES HORIZONTAL WITH
STEEL TAPE.

MONUMENTATION OF $\frac{1}{2}$ W $\frac{1}{2}$ E
TOWNSHIP CORNER

S.L.M.

RAN IN LINE FROM WEST AND SOUTH
ACCORDING TO RICHLAND ACRES SUBD.
(SEE PAGE) PT WAS 19.3 FT SOUTH
AND WEST OF HUB SET ACCORDING TO
BLM METHOD IN 1975 BY PWARD
AND N. WILLIAMS CACHE CO SURVEY CREW.
USED OLD HUB SINCE CLOSE AND
RICHLAND ACRES SURVEYOR'S ANGLES
AND BEARINGS HAVE NOT CHECK
CLOSE ENOUGH TO USE AS ALONE AS
EVIDENCE. SEE RUNS 1-5 THIS TOWNSHIP.

SET BRASS CAP ON 18" STEEL 2" PIPE
IN GROUND 1.4' ON PT OF OLD HUB.

REFERENCED AS SHOWN.

SET HUB AND ~~REBAR~~ R.R. SPIKE AT GROUND LEVEL
ABOVE HUB.

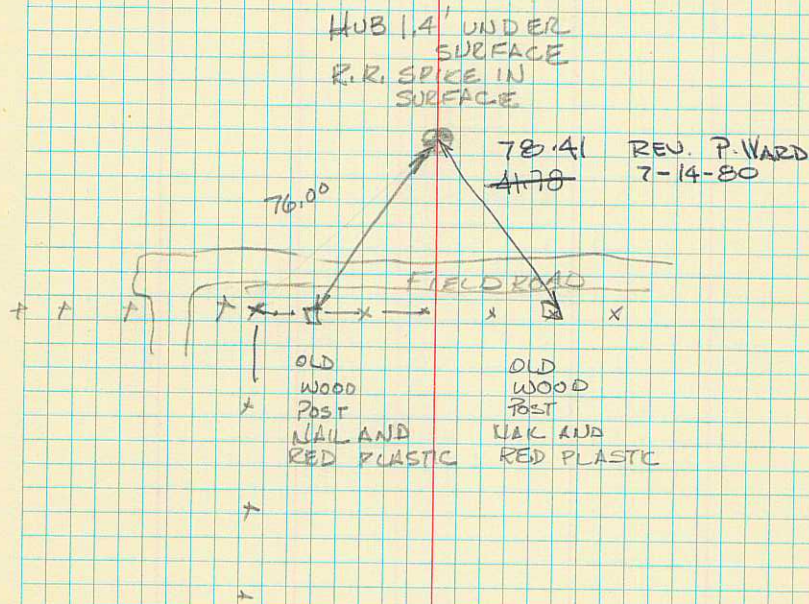
ENTERED INTO SECTION TIE BOOK
87

P.B.W.

~~478~~ 76.00
78.41

N

17



WORK ON S.W. MERIDIAN AT 12 N.

7 AUG 78

HOT CLEAR

HUDSON PC.

WARD T

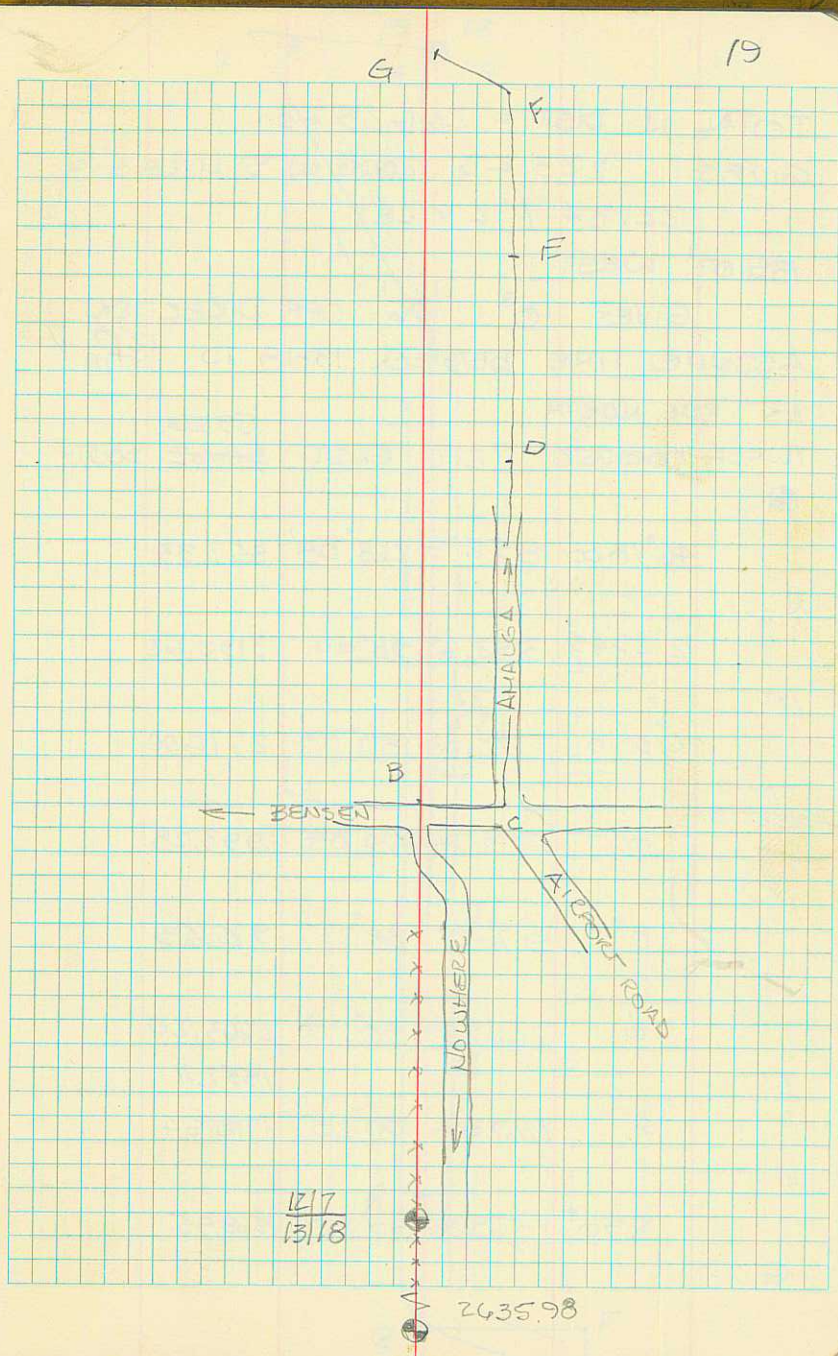
COMMENCE AT ^{12N} 1217 BRASS CAP AND
1318

RUN NORTHERLY ON RANDOM LINE TO
1318 TWIN 13 N TO LOCATE TOWNSHIP
2419

CORNER BY DOUBLE BRO PROPORTION,
BACKSIGHTED ON 13+18, A BRASS CAP

G	90°00'	421.29	90°03'	421.29
F	0°23' L	2652.62	90°03'	2652.62
E	∅	2453.59	89°46'	2453.48
D	90°23'	2712.43	90°06'	2712.43
C	90°00'	260.10	89°56'	260.10
B	∅	2890.33	∅	2890.33
1217 1318	∅	2635.98	∅	2635.98
1318				

19



TOTAL N. DIST = 26623.43

GIVES 223.43' LONG IN 5 MILES =
22.34' / 1/2 MILE.

135.07' WEST

GIVES $0^{\circ} 17' 26''$ OFF DIRECTION

ASSUME LINE BETWEEN 13+18 TO $\frac{217}{1378}$

AS TRUE NORTH

TOWNSHIP CORNER 72.7' EAST 59.26,
58.62 SOUTH

●

$46^{\circ} 18' 00''$ 857.79 $268^{\circ} 08'$ 857.33

N

$12^{\circ} 29' 45''$ 3192.62 $90^{\circ} 00'$ 3192.62

M

$0^{\circ} 32' 10''$ 2772.00 $89^{\circ} 50'$ 2772.00

L

INTERSECTION

0° 1993.28 $90^{\circ} 04'$ 1993.28

K

0° 976.00 $88^{\circ} 25'$ 975.63

J

ϕ 2663.29 $90^{\circ} 29'$ 2663.20

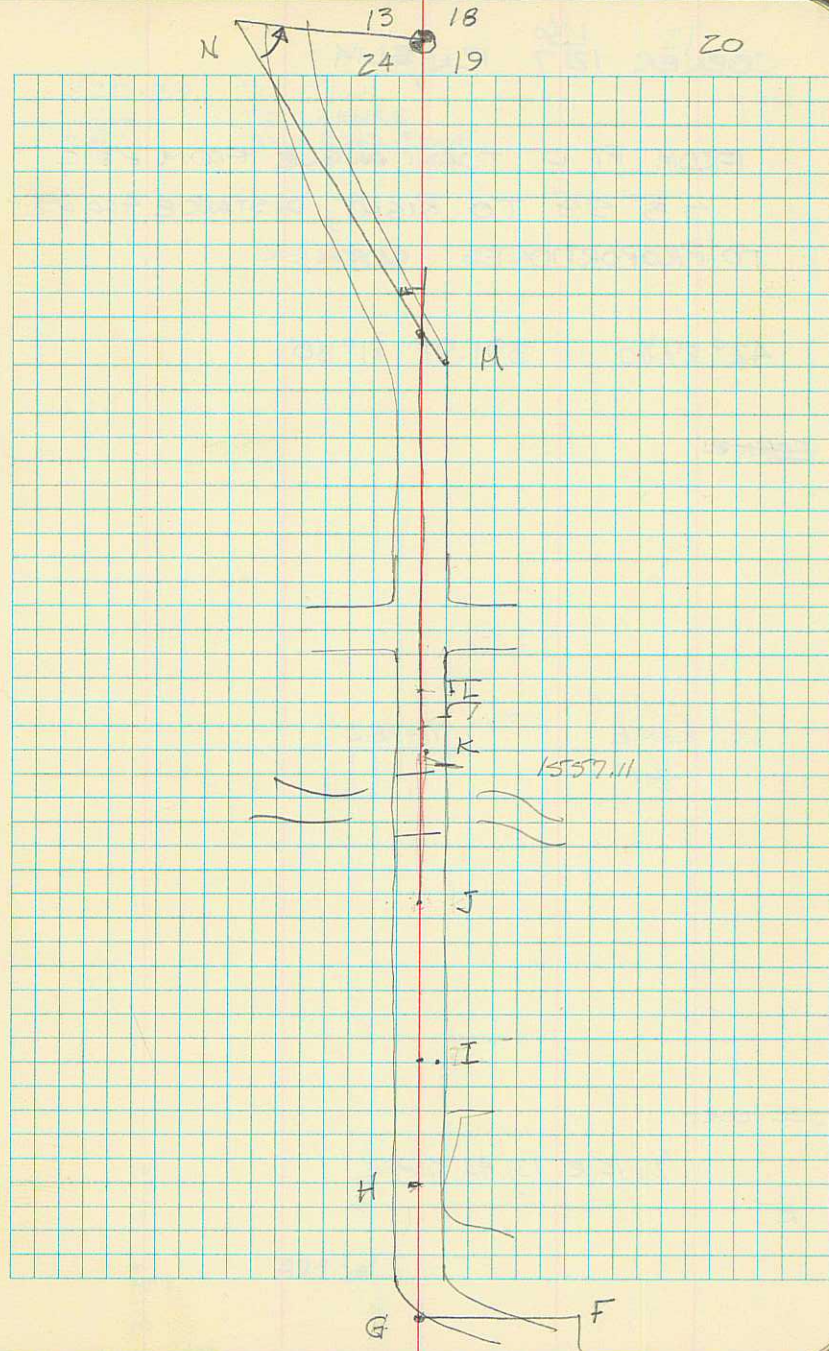
I

ϕ 1710.54 $90^{\circ} 25'$ 1710.54

H

$\phi 90^{\circ}$ 1569.96 $90^{\circ} 15'$ 1569.95

G



CORNER $\frac{116}{127}$ 12N, 81M

FROM PT D TURN ANGLE FROM PTC
 $53^{\circ} 59'$ TO RIGHT, DISTANCE 422.29'
TO PROPORTIONED CORNER

$42^{\circ} 29' 00''$ 391.91 $91^{\circ} 30'$

CORNER

ON LINE $\frac{G-H}{2.1}$ TAPED
2.1

SEC COR

$1^{\circ} 27' 15''$ R 137.43 TAPED

K

21

220.89 TO R/W
146. TO FENCE
? 242 TO ROAD EDGE

311.85 91.04

$42^{\circ} 29'$

INFORMATION FROM GEO. WALKER 21 AUG 78

SW CORN 36

-1153.82 N

10561.99 E

B DW 8 - LONG HILL

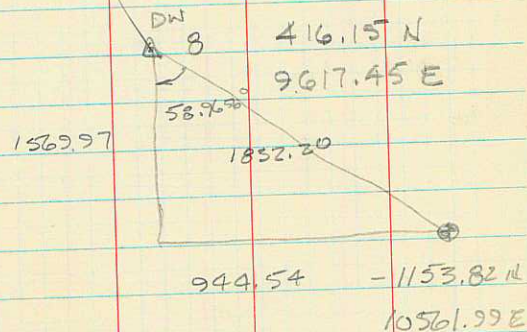
21 - GOLF COURSE (L)

A # 21

N 37° 9637' W

6885.90' (ADJUSTED)

MEAS 6885.79



4

21 - DW 8 TO ⊕ 15

186° 56' 10"

200 59' 56"

DISTANCE DW 8 TO ⊕ 15

~~1832.20~~ HORIZ.

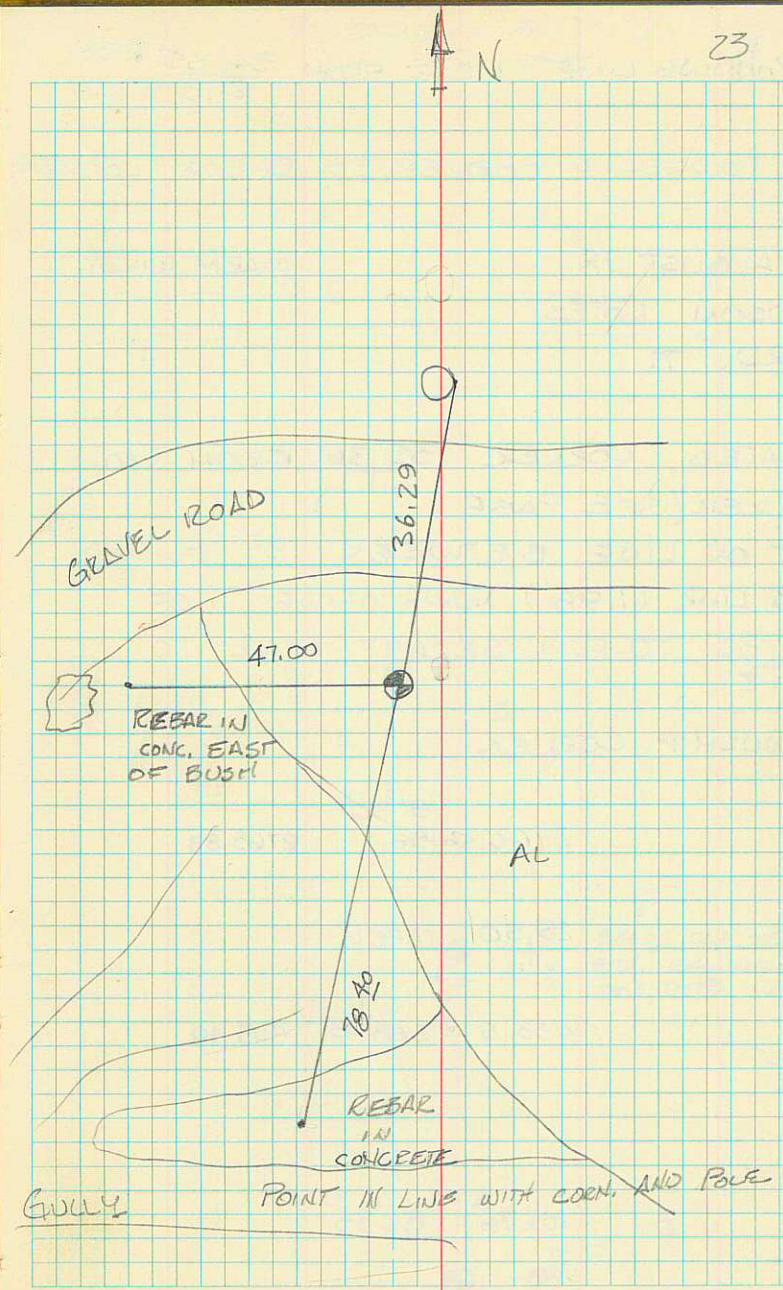
1832.20

MONUMENTATION OF COR 35 | 36 T R13 N
 2 | 11 T12 N

FOUND REBAR SET BY GEORGE WALKER.
 USED COORDINATES PRECEDING PAGE
 TO FIND IT.
 FOUND ROCK IN 1975 BUT OWNER
 CONTINUED TO DISPLACE IT.
 FOUND BY GEO WALKER IN 1976 AND
 SET REBAR IN LOCATION. PRESENT
 LOCATION IS VERY CLOSE TO
 ORIGINAL LOCATION.

SET BRASS CAP ON 12" LONG 2" PIPE
 IN CONCRETE 1.15' BELOW SURFACE
 SET R.R. SPIKE ABOVE IT.
 SET 2 REBAR IN CONC. AS W.P.'S
 AND 1 IN CUT POWER POLE AS
 SHOWN AT RIGHT

ENTERED INTO SECTION TIE
 BOOK #91
 P.B.W.



RUNNING LINE WEST FROM $\frac{34}{2} | \frac{35}{3}$ T12N
 $\frac{34}{2} | \frac{35}{3}$ T12N

TO TOWNSHIP CORNER TO CHECK LOCATION

22 AUGUST 78

WARM, WINDY

HUDSON NOTES

WARD T

LOCATED CORNER $\frac{35}{2} | \frac{36}{1}$ FROM GEO.
 WALKER (SEE PAGE 211)

SET ON LINE BETWEEN $\frac{35}{2} | \frac{36}{1}$ AND
 A 3 LNK (1.98') NORTH OFFSET $\frac{2}{1}$ OF
 $\frac{34}{3} | \frac{35}{2}$ TO RUN SECANT LINE TO
 $\frac{34}{3} | \frac{35}{2}$

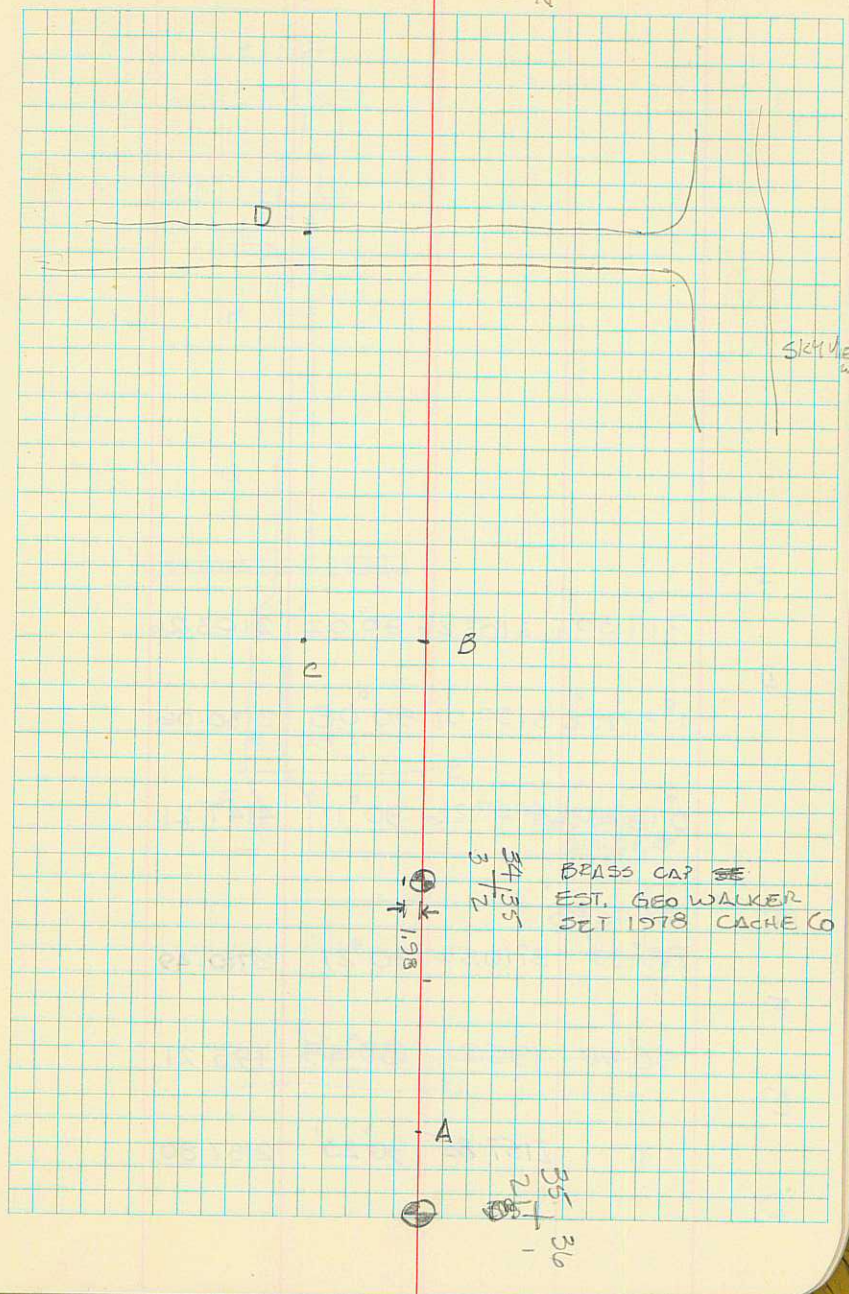
TOWNSHIP CORNER

D		$91^{\circ}16'$	
	2766.56	96	2765.88
C	29.50	TAPED	
B	453.51	$268^{\circ}43'$	453.40
	$\frac{34}{3} \frac{35}{2}$		
A	6	109.76	$86^{\circ}33'$
	$\frac{35}{2} \frac{36}{1}$		

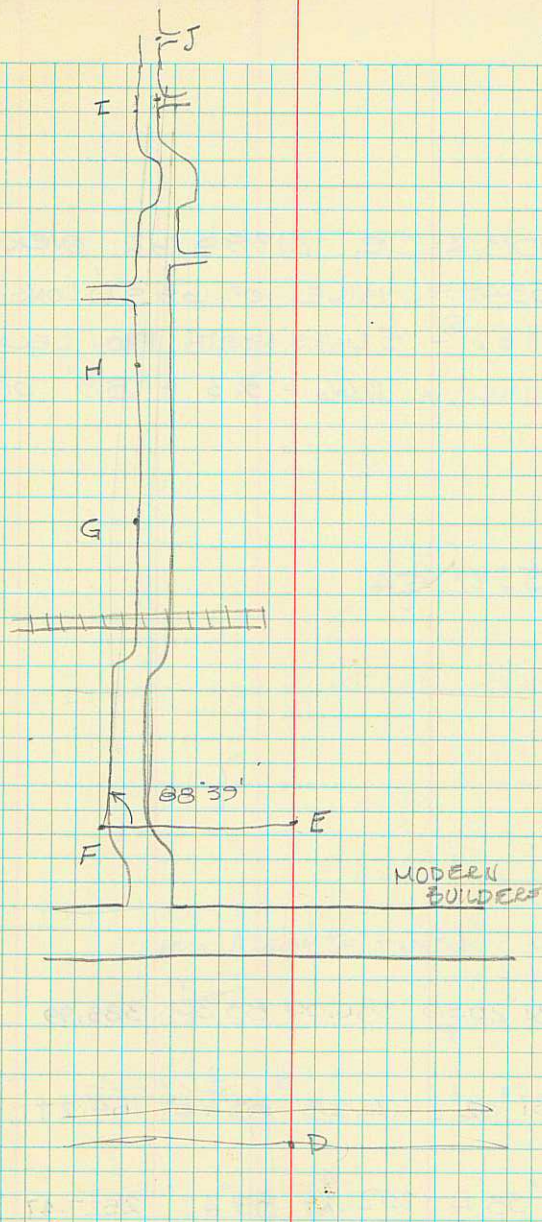
109.76 Δ 86 33

→ N

24



J	0° 17' 30"	2103.26	90° 02'	2103.26
I	1° 37' 15"	3130.07	90° 08'	3130.06
H	0° 18' 30"	4147.26	90° 17'	4147.21
G	88° 40' 50"			
	88° 39'	3710.56	90° 21'	3710.49
F	90° 00'	195.21	89° 49'	195.21
E	0	2157.85	90° 23'	2157.80
D				



TOTAL DISTANCE 21399.62 OVER 4 MILES

= 5349.91/MILE OR 69.91' LONG/MILE

N/S = 11.66⁽⁵⁾ - 5 LINKS NORTH FROM SECANT TO

TRUE LINE = 11.66 - 3.3 = 8.3' OF

LINE

5322.54

M

81°20'50" _R 386.00 89°35' 385.99

L

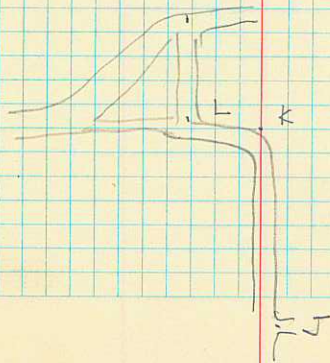
81°02' _L 164.28 89°14' 164.27

K

2°38' _L 2527.29⁴ 89°47' 2527.47

J

M = ASSUMED TOWNSHIP CORNER



CORNER 1 + 6 12H SLM

SET ON PT E (PAGE 19) BACKSIGHT
ON D TURN $86^{\circ}23'36''$ TO RIGHT
MEASURE 390.41' TO PROPORTIONED 1/4 CORNER
POINT IS 75' NORTH OF FENCE LINE

CORNER 12 + 7 12N & SLM

SET ON PT B (PAGE 19) BACKSIGHT ON
BRASS CAP 12 + 7 RUN SOUTH 213.14' FROM B
WEST 13.18
EAST 31.66
TURN \times OF $8^{\circ}26'57''$ FROM CAP. TO RIGHT
DISTANCE 215.48

CORNER 25 + 30
36 + 31

465.95' SOUTH NORTH OF PT J

MONUMENTATION OF 24|19
25|30 S.L.M

10 AUG 78

HUDSON PC.

WARD T

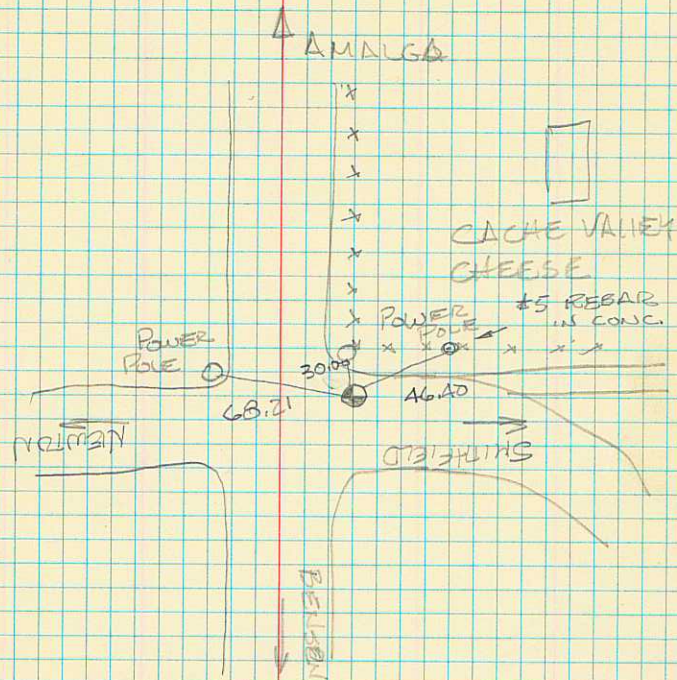
CORNER SET BY EUGENE SHaub,
RR SPIKE SET BY ERWIN MOSER,
FOUND R.R. SPIKE WITH METAL
DETECTOR, SET BRASS CAP IN CONC.
OVER R.R. SPIKE, WITNESSED AS
SHOWN.

ENTERED INTO SECTION TIE
BOOK # 88

P.B.W.

4 N

28



28 AUG 78

RUNNING LINE OF TOWNSHIP LINE
BETWEEN TOWNSHIP 10N/11N.

FROM TOWNSHIP CORNER ESTABLISHED
1978 BY CACHE CO SURV. (SEE PAGE
50 MERIDIAN BOOK 1978 #1) RUN WEST
TO $\frac{33}{4} \frac{34}{3}$ USED PREVIOUS LINE - (P 36 181D)

AND PROPORTIONED CORNERS.

CORNER $\frac{34}{3} \frac{35}{2}$ # COORDINATES

5310.80 # E

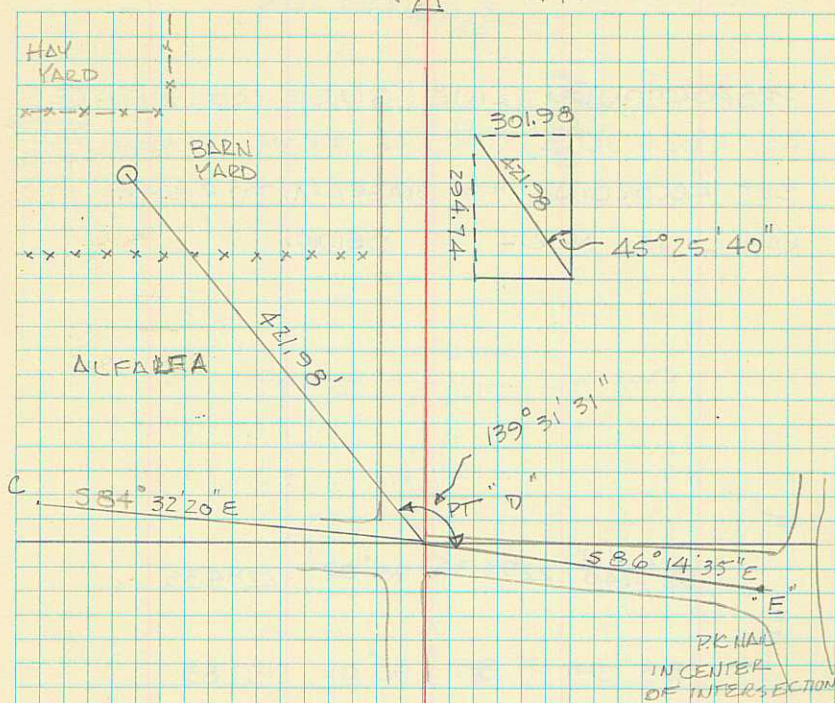
8.50 N

TOTAL DISTANCE 15932.39 E 17.23' N OVER
3 MILES.

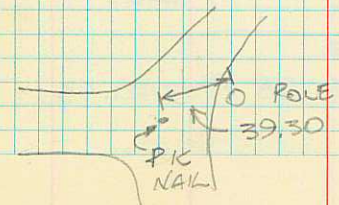
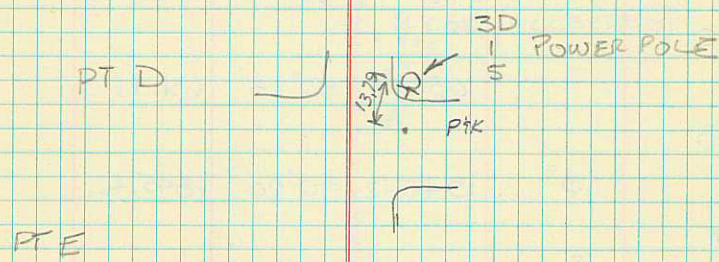
TO SET CORNER SET ON PT D OF SURVEY,
(P. 36 SEE ABOVE) PT D IS NAIL AT INTERSECTION
OF 2ND EAST AND 1ST NORTH, WEISSVILLE,
ON THE NW CORNER OF INTERSECTION.
SIGHTED ON PT E AND TURNED AS
SHOWN ON RIGHT

$\frac{38}{4} \frac{34}{3}$

32



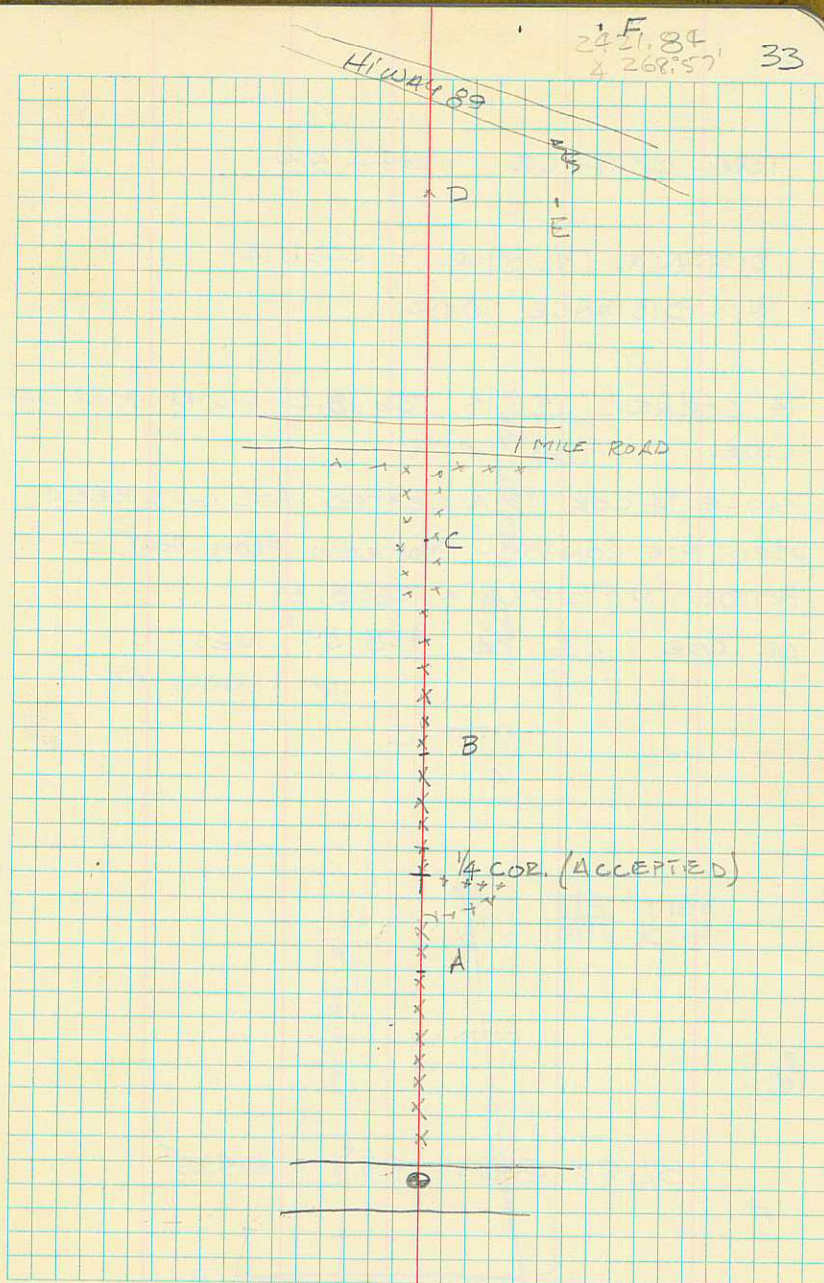
REFERENCED AS FOLLOWS



CORNER $\frac{34}{3} | \frac{35}{2}$ T11N | WEST
 TION

PROPORTIONED LINE GIVES COORDINATES
 AS 10621.60 E 11.48 N FROM CORNER $\frac{33}{4} | \frac{34}{13}$
 SET ACCORDING TO DIAGRAM TO RIGHT.
 RAN LINE NORTH AS BELOW.

F	$98^{\circ}37'40''$	2294.35	$90^{\circ}09'$	2294.35
E	$88^{\circ}59'$	177.89	$90^{\circ}01'$	177.89
D	ϕ	3430.74	$91^{\circ}36'$	3429.40
C		631.70	$92^{\circ}28'$	631.11
B	ϕ	1845.42	$90^{\circ}00'$	1845.42
A	$0^{\circ}25'30''$ R	246.74	$92^{\circ}06'$	246.57
		2421.84	$268^{\circ}57'$	2421.43
$\frac{11}{67}$				



TOTAL DISTANCE 10644.54

DISTANCE $1/2$ MILE = 2661.14

$11/5$ DISTANCE 0.02'

$1/4$ CORNER $1/2$ IS 2668.0 FROM MERIDIAN LINE. 1.80' NORTH

SINCE $1/4$ COR. IS ACCEPTED AND HAS BEEN USED FOR CONTROL PROPORTION FROM THAT - PROPORTION $1/2$ MILE = 2658.85'

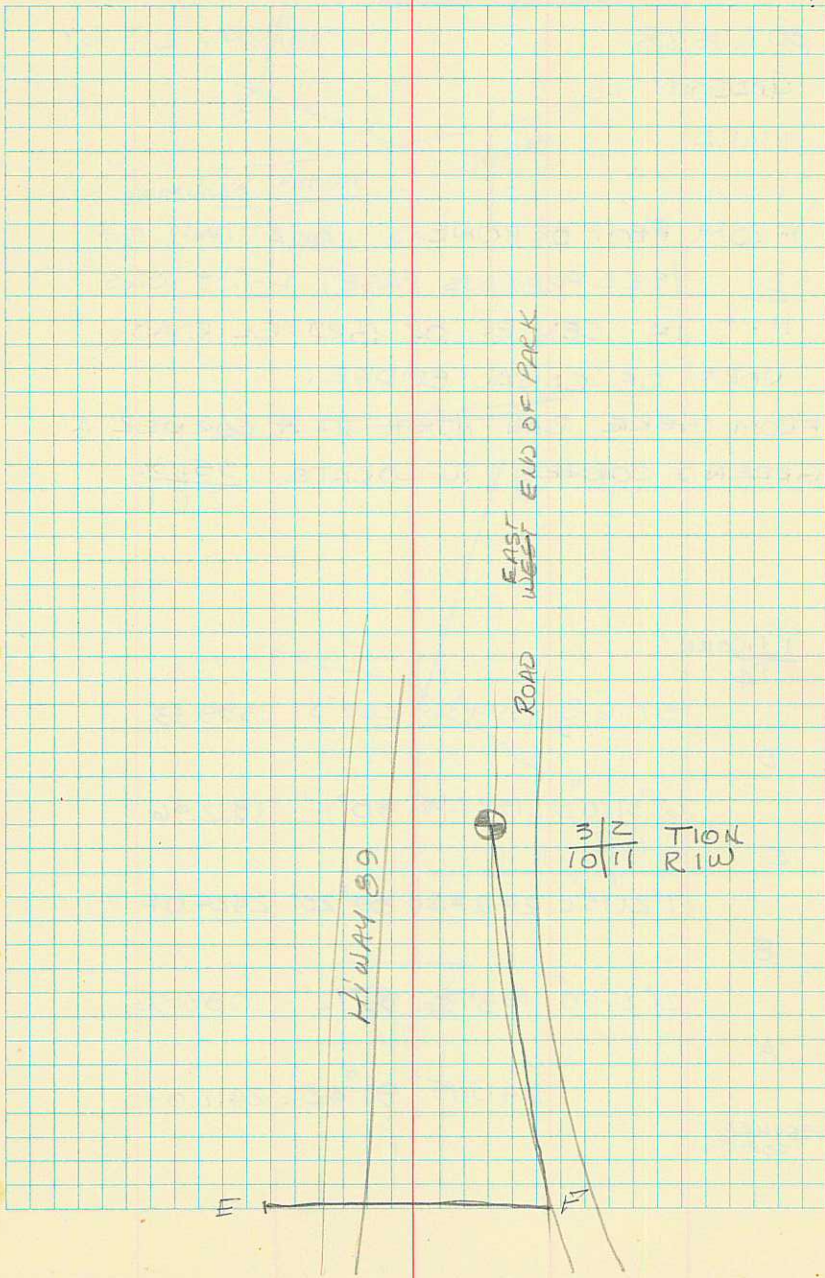
OR COR. $1/2$ IS 428.89' WEST
 $11/12$.60' NORTH OF

PT C

$3/2$
 $10/11$

$86^{\circ}17'15''$ 565.31 $89^{\circ}11'$ 565.25

F



RUN NORTH BETWEEN 2/1 TION. RIW

30 AUG 78

WARM, CLOUDY

HUDSON

WARD

FROM PROPORTIONED LOCATION OF
2/1 (SEE PREVIOUS PAGE) POINT WAS
11/12 IN CENTER OF GRAVEL ROAD
NORTH OF CANAL BRIDGE.

FROM THERE RAN NORTH TO 1/4 CORNER AT
GREEN'S CORNER TO LOCATE 35/36
2/1

1/4 CORN
4

57°16' R 1399.36 269°37' 1399.33

D

67°37'10" DL 1322.96 90°11' 1322.96

C

7°21'15" L 2424.20 89°20' 2424.04

B

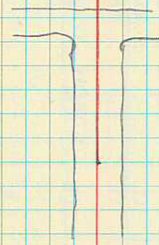
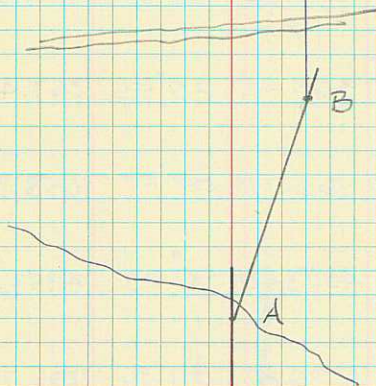
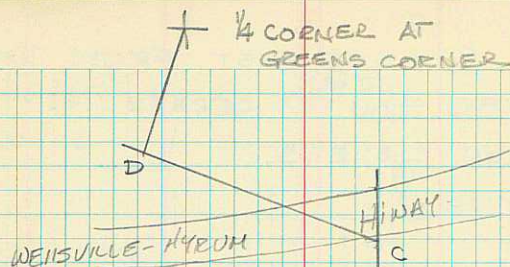
21°21'50" 1081.36 92°12' 1080.96

A

2413.15 91°42' 2412.09

ASSUMED
CORNER

35



31 AUG 78 RUNNING EAST FROM TOWNSHIP
 COENER ^{11 IN SLM} TO CORNER $\frac{33}{4} \frac{34}{3}$ R. E.
 TO PROPORTION CORNERS.

HUDSON NOTES

WARD K

WARM CLEAR

START AT MONUMENTED CORNER OF

TOWNSHIP $\frac{11}{10}$ S. 1/4 M.

I

11 17 30 579.24 89° 17' 579.19
 R

H

22° 54' 45" 368.40 85° 55' 367.40
 L

G

17 02 RD 1662.73 86° 21' 1658.76

F

1° 13' 10" 4353.40 90° 03' 4353.40
 L

E

1° 20' 1296.87 89° 36' 1296.79
~~1° 20'~~
 RD

D

0° 38' RD 2422.01 89° 25' 2421.88

C

0° 54' 40" 2709.38 89° 23' 2709.22
 R
 D

B

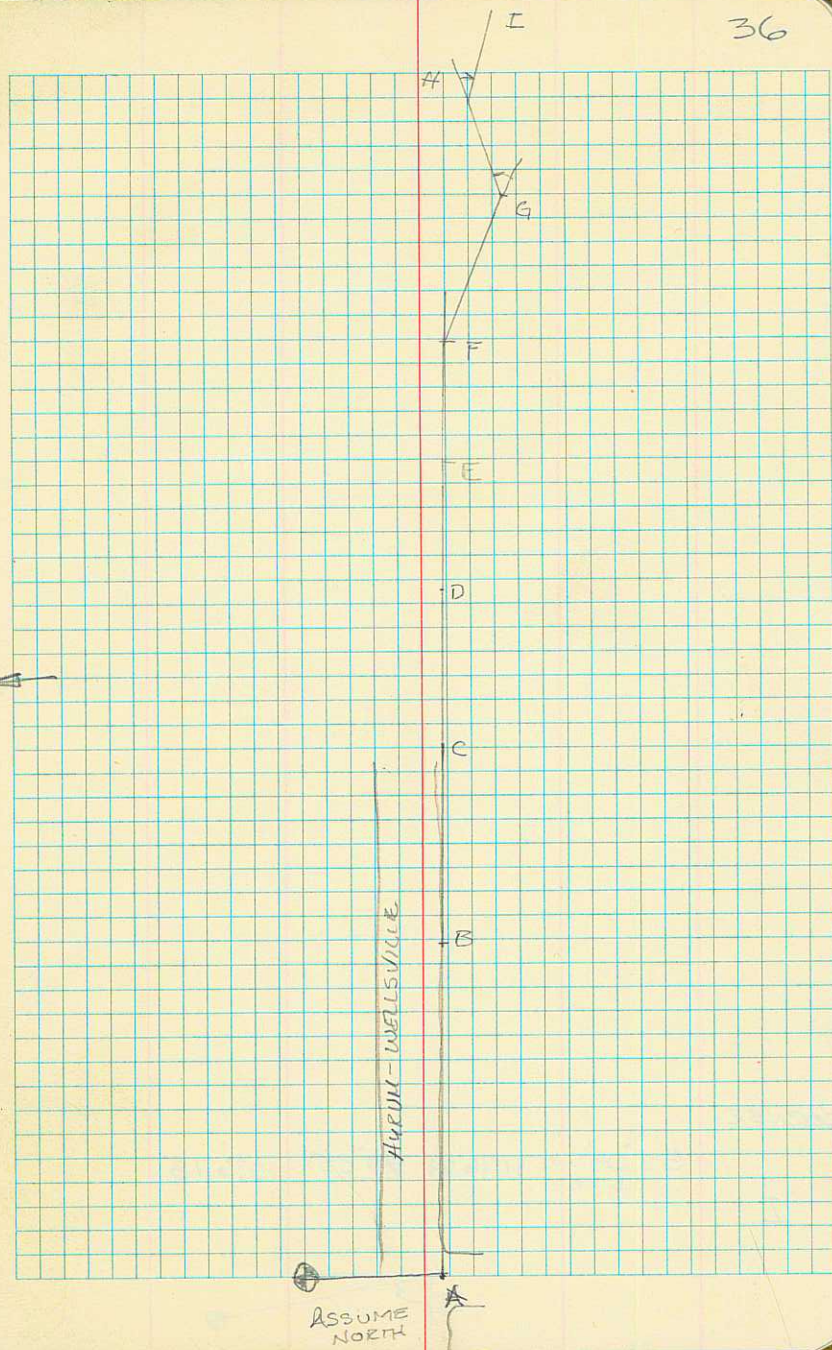
89° 15' 50" 2600.54 89° 31' 2600.45
 IN R

A

274.00 89° 46' 274.00

+

36



CORNER

85°08'50" 1076.24 90°35' 1076.18
INTR

I



5 SEPT 78 RERUN LINE EAST FROM TOWNSHIP COR.

HUDSON P.C.

WARM CLOUDY

WARD *

PT	DOUBLED HOR. \times	HORIZA	SLOPE DISTANCE	VERT. \times	HORIZ DISTANCE
H					
	45°50' L	22°55'00	368.42	85°56'	367.49
G					
	34°03' R	17°01'30"	1662. ¹⁶ 60	86°32'	1659.11
F					
	1°50' L	0°55'00	4353.40	90°03'	4353.40
E	1°49'15" LT	0°54'37"	1328.26	89°38'	1328.23
D	2°51' R	1°25'50"	2390.59	89°26'	2390.47
	1°11'30" R		2451.81	89°25'	
C		0°54'35'	2709.30		
	1°49'10" R DOV.	2709.30	89°23'	89°23'	2709.14
B					
	89°14'15"	2600.48	89°31'		
A	INT. R				
		274.00	89°46'		
+					

DRY LAKE -

0° 06' 45" R
INSIDE
2668.46
90° 15'

39



170° 18' R 85° 09' 1076.16 90° 35' 1076.10
INT.

I

22° 34' 15" 11° 17' 07" 579.19 88° 50' 579.09

H

R

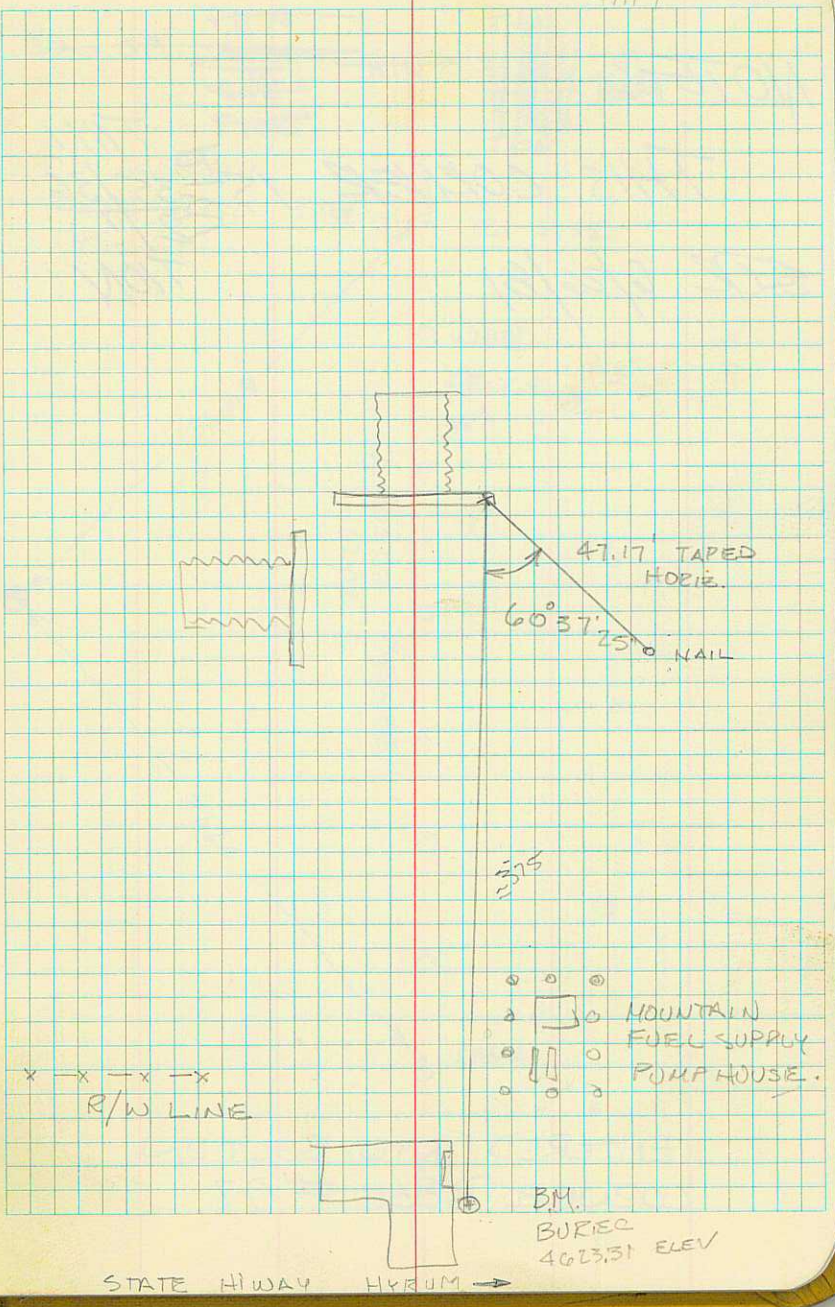
57

MONUMENTATION OF CORNER 31 32 T11N
6 5 T10W

8 SEPT 78

PROPORTIONED LINE (PRECEDING PAGE) SET POINT AS SHOWN ON RIGHT. MOUNTAIN FUEL PUMPHOUSE DESCRIPTION IS FROM CORNER AND AS SHOWN DIFFERED BY 3' ON LINE 4' DISTANCE. SET CORNER ON MOUNTAIN FUEL POINT. SET PT AS SHOWN

60° 37' 25" 40
47.17

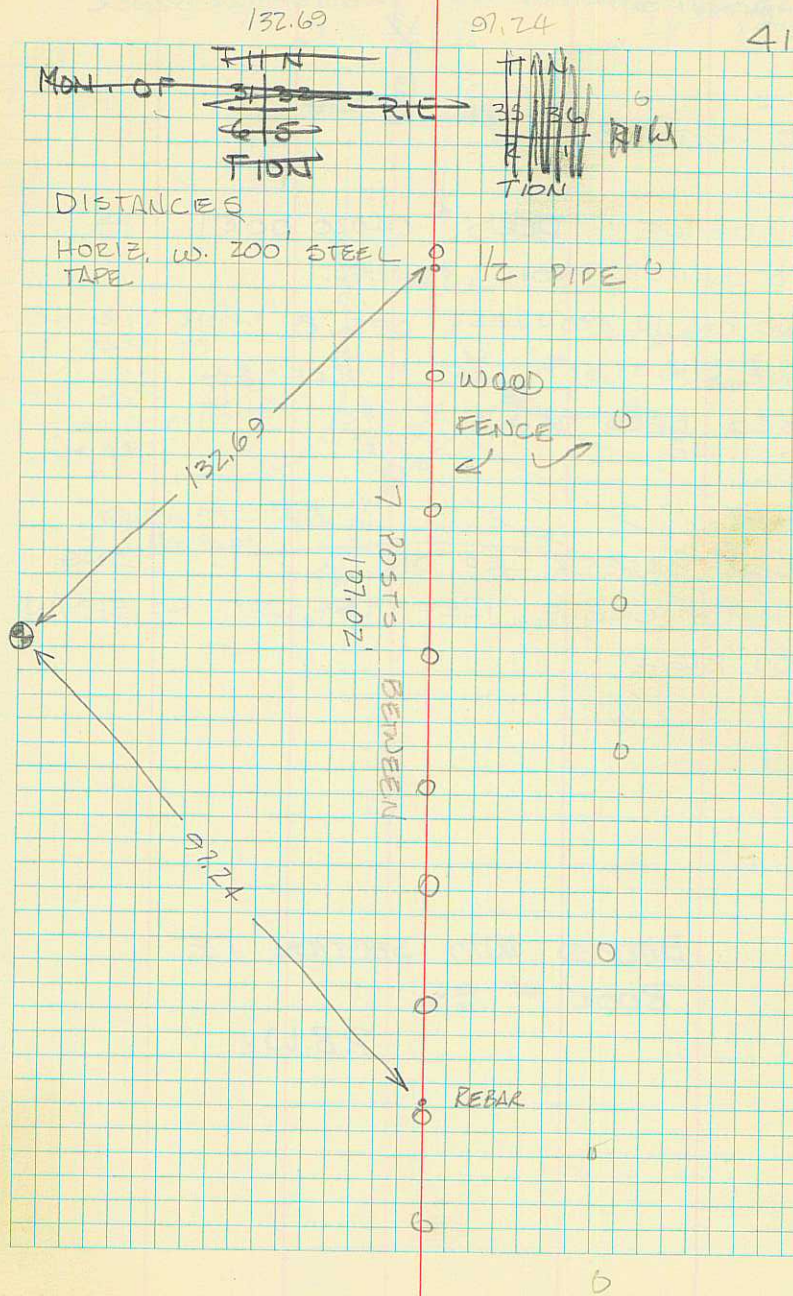


NOTE:

THIS CORNER IS ~~35/36~~ ^{TINN} ~~22/1~~ ^{TION}

SR 6/26/81

ENTERED INTO SECTION
CORNER BOOK # 97



MONUMENTATION OF TOWNSHIP CORNER
R/W ~~7~~ R/E

8 SEPT 78

R/W $\frac{13}{12}$ R/E

EVIDENCE: DEED # 04020 0001 TIES
TO CORNER FROM FENCE.

LINE RUN IN FROM WEST OFF 8' FROM CORNER

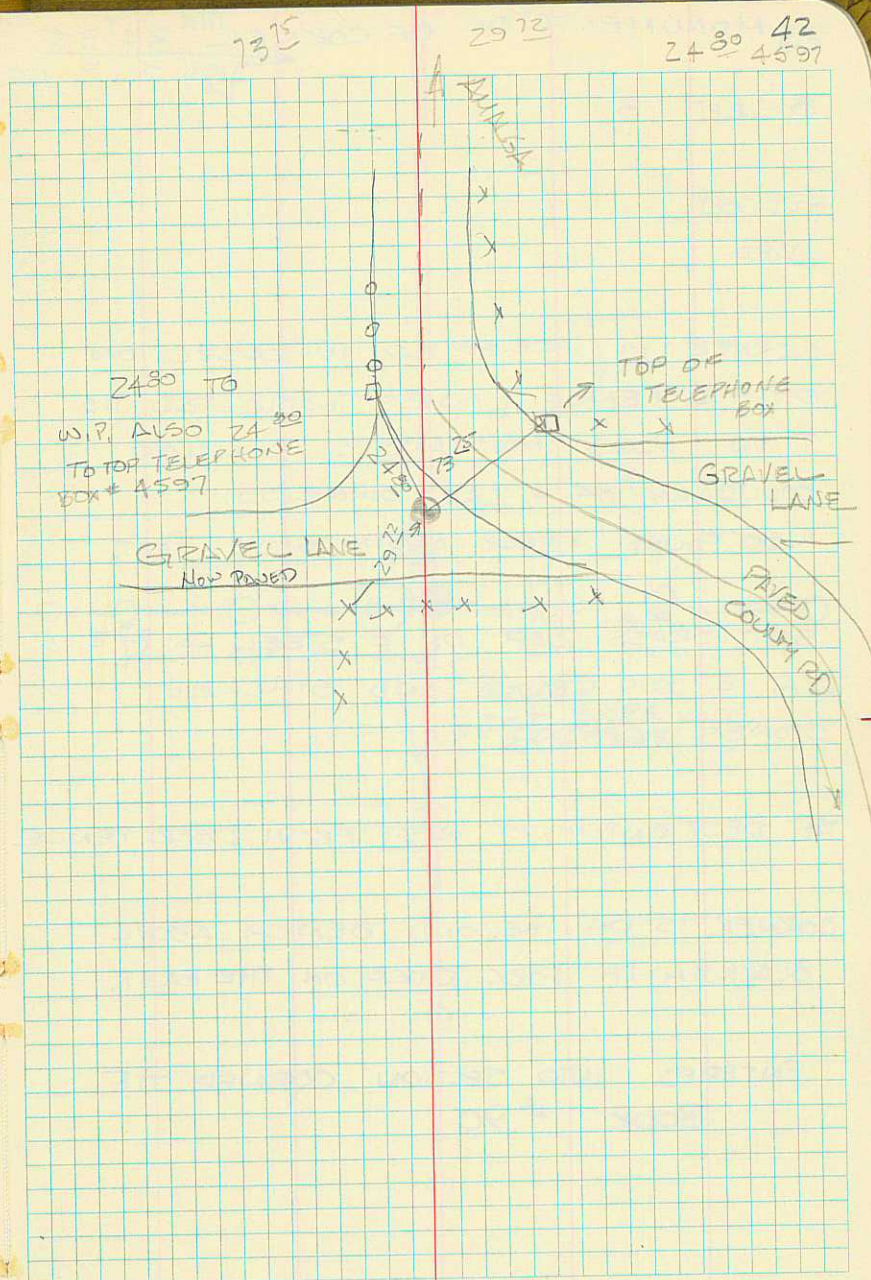
LINE RUN NORTH OF 2' CORNER.

USED DEED TIES

SET BRASS CAP ON 2" PIPE 1' LONG
IN CONCRETE. REFERENCED AS SHOWN
ON RIGHT

ENTERED INTO SECTION TIE
BOOK # 89

P.B.W.



MONUMENTATION OF CORNER ^{T11N 34 35}
T10N 3 2 R1E

8 SEPT 78

HUDSON
WARD

CORNER IS ACCEPTED INTERSECTION
OF 4 FENCE LINES. INDICATED AS
+ ON USGS MAP AND IS COMMON
BOUNDARY OF 4 LAND OWNERS.
ALSO FOUND REBAR ALONG SIDE POST.

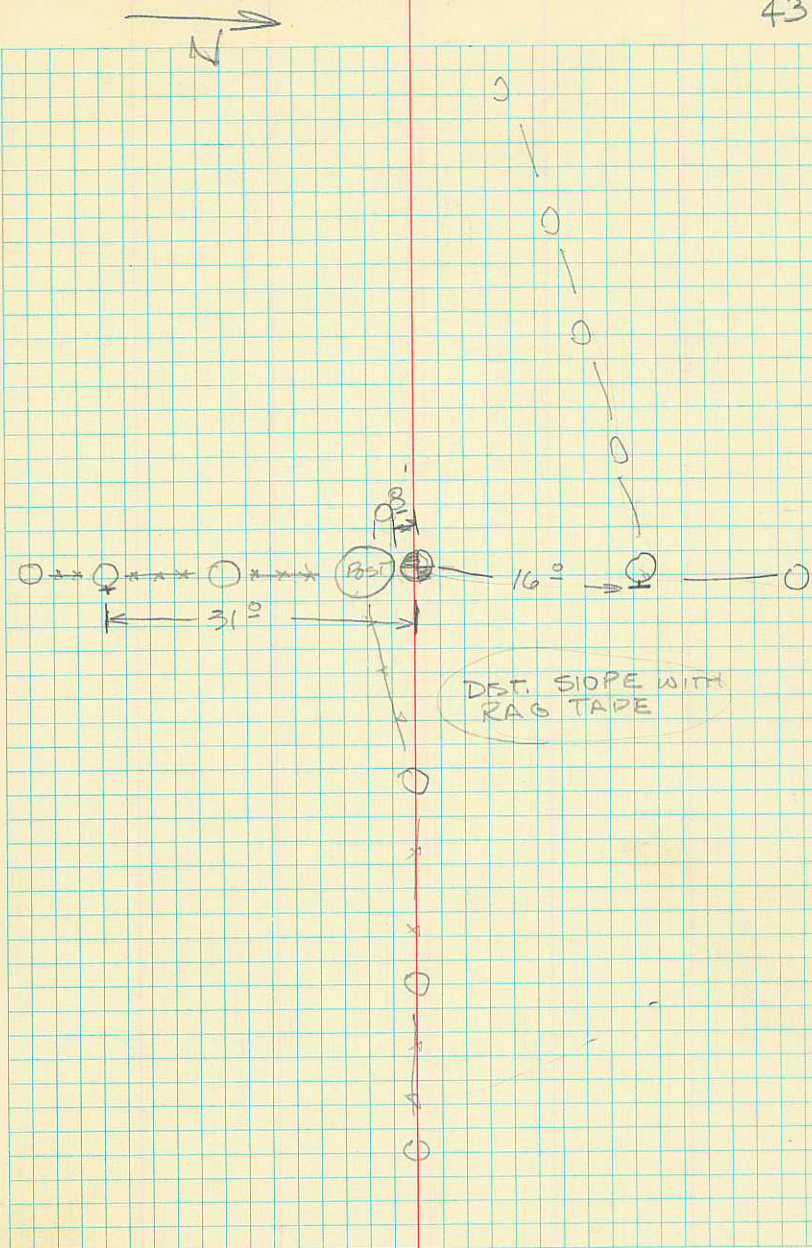
SET BRASS CAP ON 3' STEEL REBAR PIPE 2"
DIA. 2' INTO GROUND AND STACKED
STONES AROUND IT.

BEST ENTRY IS WEST FROM DEER FENCE.

CORNER IS ON SECOND BENCH ABOVE
BLACKSMITH FORK RIVER ON THE EAST.

ENTERED INTO SECTION CORNER TIE
BOOK #90

43



MONUMENTATION OF

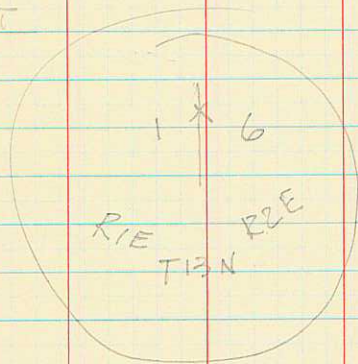
1/4 CORNER

T13N
R1E R2E

FOUND STONE FIRMLY SET AND
PLAINLY MARKED 1/4

SET BRASS CAP 3' LONG & IN GROUND
2 1/2' DEEP, IN CONCRETE AND BURIED
STONE ALONGSIDE TO NORTH OF
MONUMENT

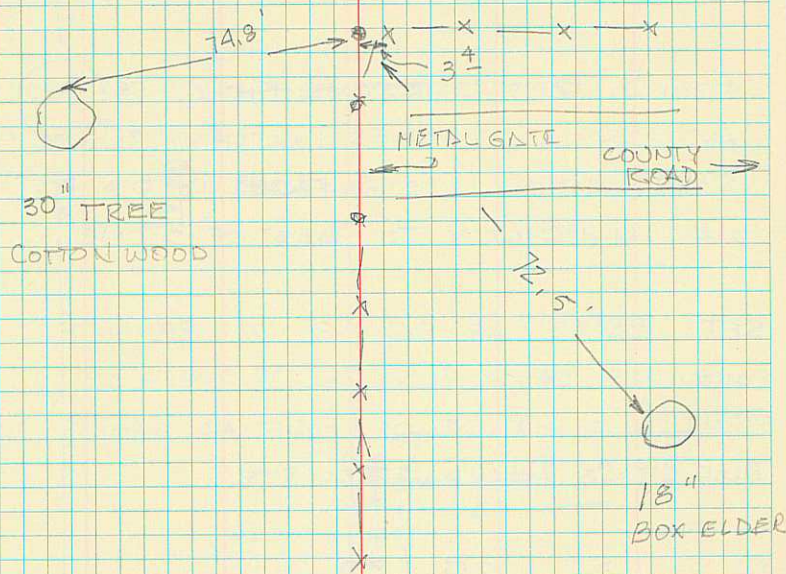
MARKED



ENTERED INTO SECTION TIE BOOK
110

N

45



MONUMENTATION OF COR 25 30
 36 31
 R1E 4R2E
 T14N

FOUND BLUE LIMESTONE FIRMLY SET
 AND PLAINLY MARKED 1 NOTCH ON SOUTH FACE
 5 NOTCHES ON NORTH FACE. 12" DIA. POST
 WAS IMMEDIATELY TO WEST OF STONE.

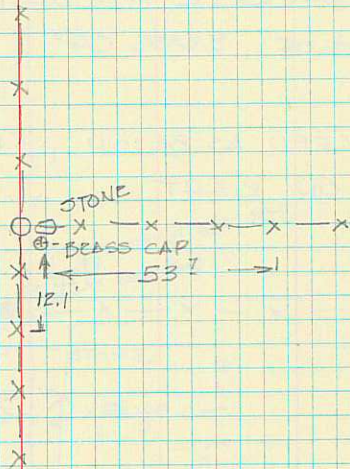
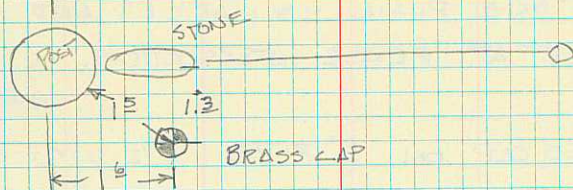
SET BRASS CAP ON 3' 2" PIPE WITH
 FOLLOWING DESCRIPTION. IN TO SOUTH OF
 STONE AND EAST OF POST AS SHOWN
 PILED STONE AROUND STEEL PIPE.

6-6-79
 R1E
 25 | 30
 36 | 31
 R2E
 T14N

ENTERED INTO SECTION TIE BOOK # III

AN

46

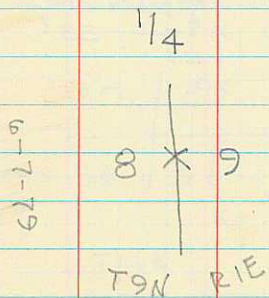


MONUMENTATION OF 8+9 T9N R1E

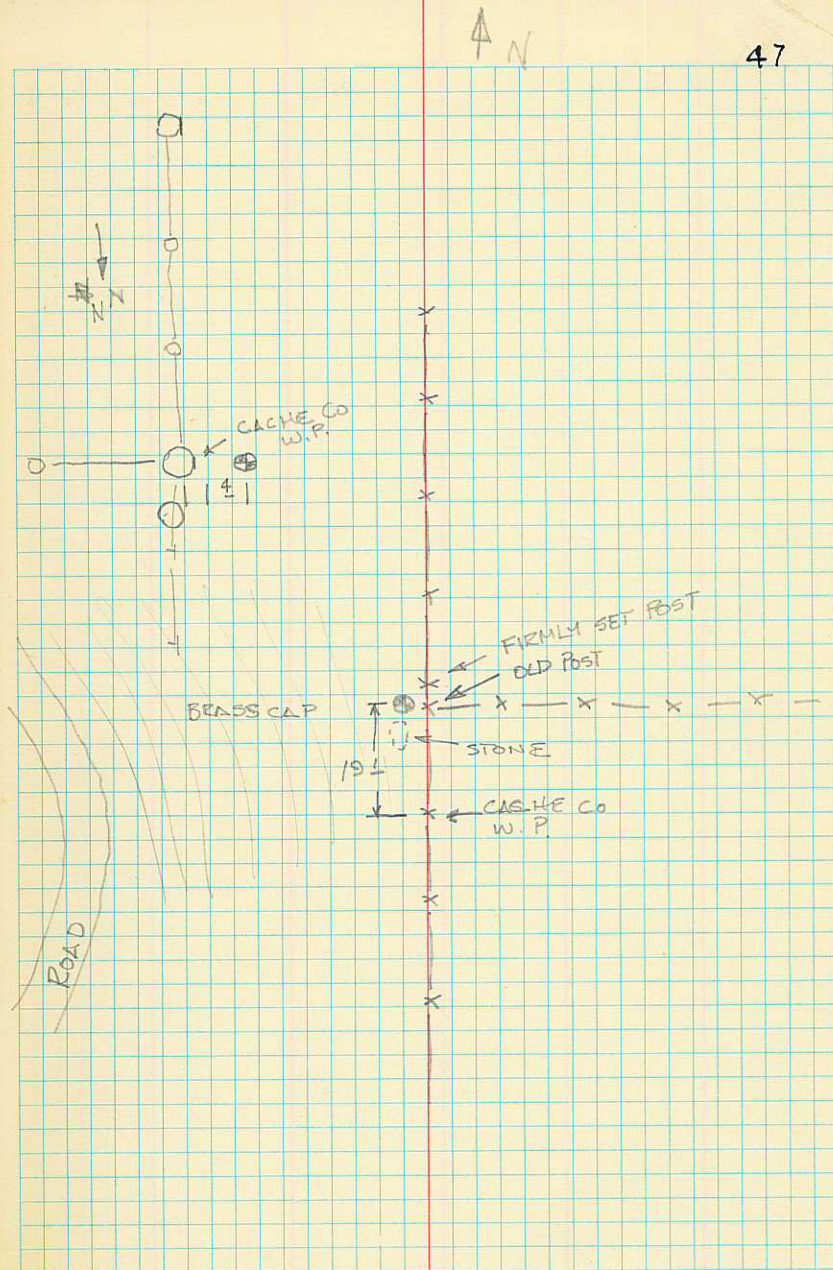
FOUND STONE PLAINLY MARKED AND
FIRMLY SET AT FENCE INTERSECTION.

SET BRASS CAP ON 2" PIPE 2 1/2' IN GROUND
IN CONCRETE AND BURIED STONE DIRECTLY
SOUTH OF BRASS CAP

MARKED AS BELOW, REFERENCED AS SHOWN
ON RIGHT



ENTERED IN SECTION 715 BOOK
112



INTLT.
BACK

155°36'20"

155°36'10" 4020.62

262°25'20" 4020.74

85°32'33"

85°32'45"

270°27'30"

INDEX OF CURVE AND REDUCTION TABLES

Table I—SLOPE STAKE

Table II—STADIA CORRECTION AND HORIZONTAL DISTANCES

Table III—TRIGONOMETRIC FORMULAE

Table IV—NATURAL TRIGONOMETRICAL FUNCTIONS

CURVE FORMULAE

Table V—TANGENTS AND EXTERNALS TO A 1° CURVE

USEFUL RELATIONS

Table VI—INCHES TO DECIMALS OF A FOOT

Table VII—MINUTES IN DECIMALS OF A DEGREE

Table VIII—MIDDLE ORDINATES OF RAILS

Table IX—SHORT RADIUS CURVES

Table X—RODS IN FEET, 10THS AND 100THS OF FEET

Table XI—LINKS IN FEET, 10THS AND 100THS OF FEET